

Floor 17

Suite 1700

~12,322 SQFT

High-Rise — Base Plan

Mark Anderson

Vice Chairman

mark.anderson@cushwake.com

+1 (415) 713-1014

Lic. #01325399

Danny Pickard

Director

danny.pickard@cushwake.com

+1 (415) 773-3572

Lic. #01975977

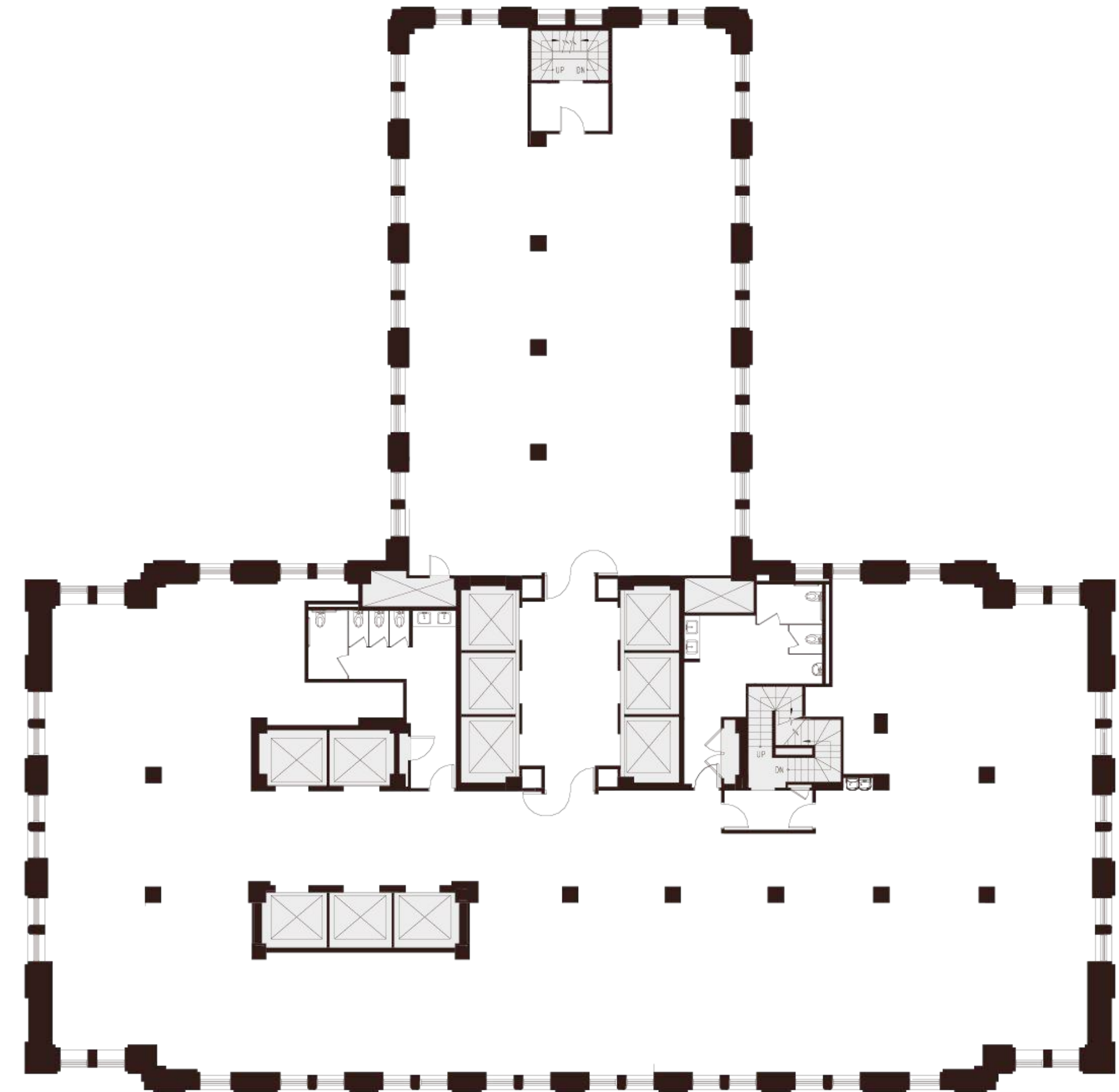
Elena Saccone

Senior Associate

elena.saccone@cushwake.com

+1 (630) 699-9687

Lic. #02151049



Montgomery Street

N



235 Montgomery St. San Francisco, CA 94104



Floor 17

Suite 1700

~12,322 SQFT

High-Rise — Hypothetical Open Office

- 81 Workstations
- 2 Conference Rooms
- 7 Huddle Rooms
- 4 Phone Rooms
- 1 Break Area
- 1 Copy Area
- 1 Reception Area
- 1 Server Room
- 2 Storage Rooms

Mark Anderson

Vice Chairman

mark.anderson@cushwake.com

+1 (415) 713-1014

Lic. #01325399

Danny Pickard

Director

danny.pickard@cushwake.com

+1 (415) 773-3572

Lic. #01975977

Elena Saccone

Senior Associate

elena.saccone@cushwake.com

+1 (630) 699-9687

Lic. #02151049



Montgomery Street



235 Montgomery St. San Francisco, CA 94104



Floor 17

Suite 1700

~12,322 SQFT

High-Rise — Hypothetical Private Office

- 22 Private Offices
- 4 Workstations
- 3 Conference Rooms
- 2 Huddle Rooms
- 1 Break Area
- 1 Copy Area
- 1 Reception Area
- 1 Server Room
- 1 Storage Room

Mark Anderson

Vice Chairman

mark.anderson@cushwake.com

+1 (415) 713-1014

Lic. #01325399

Danny Pickard

Director

danny.pickard@cushwake.com

+1 (415) 773-3572

Lic. #01975977

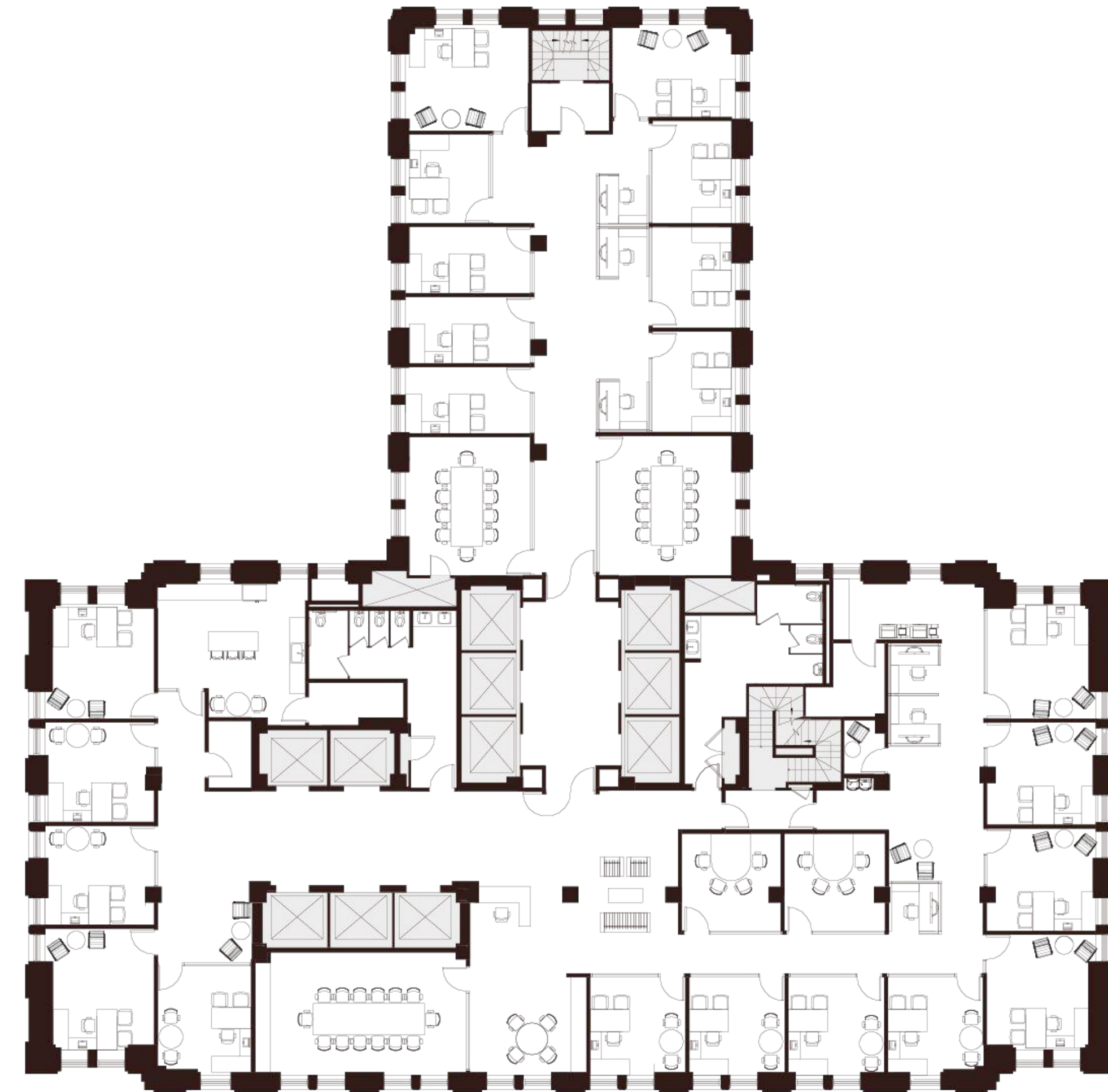
Elena Saccone

Senior Associate

elena.saccone@cushwake.com

+1 (630) 699-9687

Lic. #02151049



Montgomery Street



235 Montgomery St. San Francisco, CA 94104



Floor 19

Suite 1900

~11,323 SQFT

High-Rise — Base Plan

Mark Anderson

Vice Chairman

mark.anderson@cushwake.com

+1 (415) 713-1014

Lic. #01325399

Danny Pickard

Director

danny.pickard@cushwake.com

+1 (415) 773-3572

Lic. #01975977

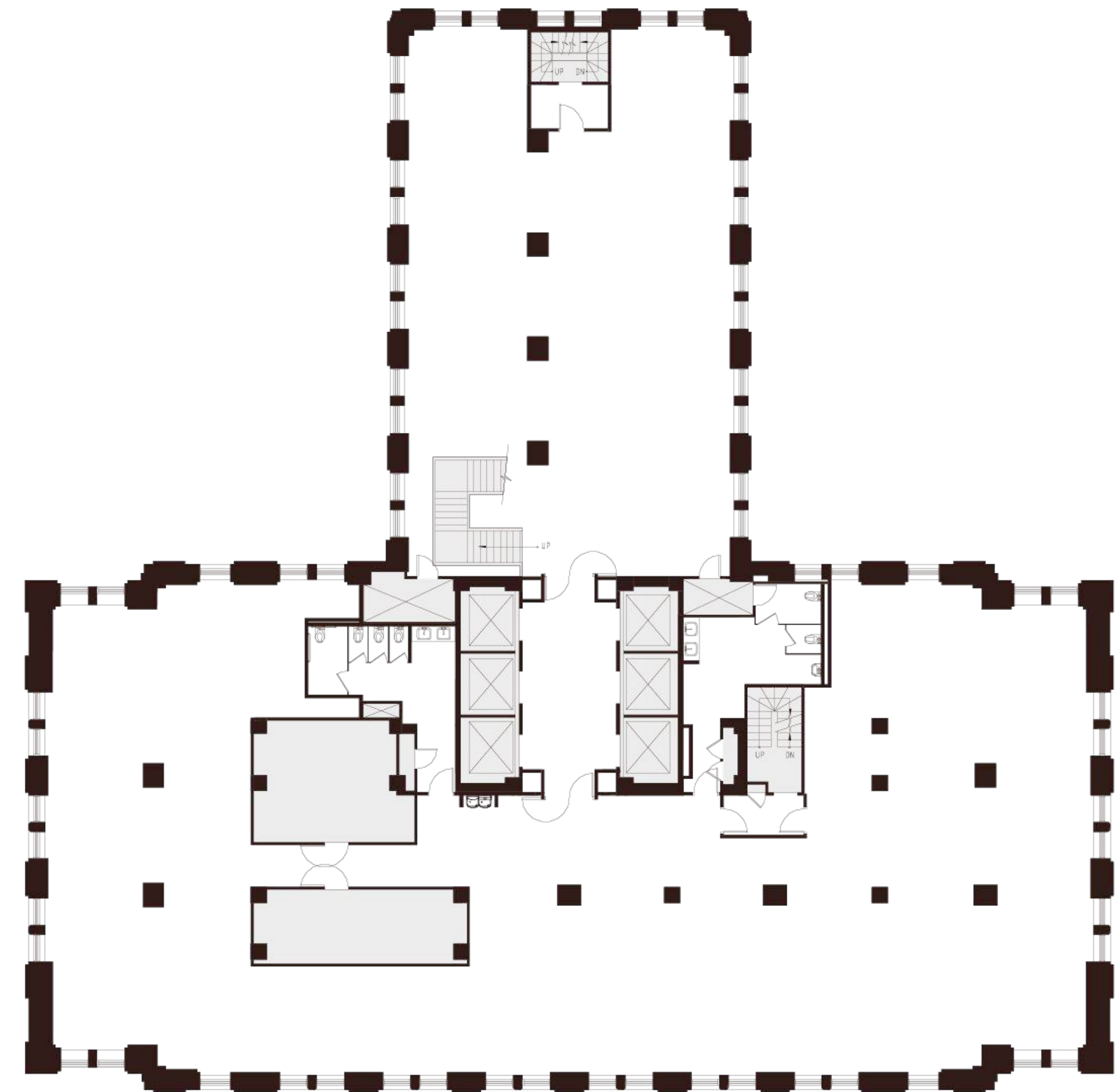
Elena Saccone

Senior Associate

elena.saccone@cushwake.com

+1 (630) 699-9687

Lic. #02151049



Montgomery Street

N



235 Montgomery St. San Francisco, CA 94104



Floor 19

Suite 1900

~11,323 SQFT

High-Rise — Hypothetical Open Office

- 81 Workstations
- 2 Conference Rooms
- 7 Huddle Rooms
- 4 Phone Rooms
- 1 Break Area
- 1 Copy Area
- 1 Reception Area
- 1 Server Room
- 2 Storage Rooms

Mark Anderson

Vice Chairman

mark.anderson@cushwake.com

+1 (415) 713-1014

Lic. #01325399

Danny Pickard

Director

danny.pickard@cushwake.com

+1 (415) 773-3572

Lic. #01975977

Elena Saccone

Senior Associate

elena.saccone@cushwake.com

+1 (630) 699-9687

Lic. #02151049



Montgomery Street



235 Montgomery St. San Francisco, CA 94104



Floor 19

Suite 1900

~11,323 SQFT

High-Rise — Hypothetical Private Office

- 22 Private Offices
- 6 Workstations
- 3 Conference Rooms
- 2 Huddle Rooms
- 2 Phone Rooms
- 1 Break Area
- 1 Copy Area
- 1 Reception Area
- 1 Server Room
- 2 Storage Rooms

Mark Anderson

Vice Chairman

mark.anderson@cushwake.com

+1 (415) 713-1014

Lic. #01325399

Danny Pickard

Director

danny.pickard@cushwake.com

+1 (415) 773-3572

Lic. #01975977

Elena Saccone

Senior Associate

elena.saccone@cushwake.com

+1 (630) 699-9687

Lic. #02151049



Montgomery Street



235 Montgomery St. San Francisco, CA 94104



Floor 20

Suite 2000

~11,434 SQFT

High-Rise — Base Plan

Mark Anderson

Vice Chairman

mark.anderson@cushwake.com

+1 (415) 713-1014

Lic. #01325399

Danny Pickard

Director

danny.pickard@cushwake.com

+1 (415) 773-3572

Lic. #01975977

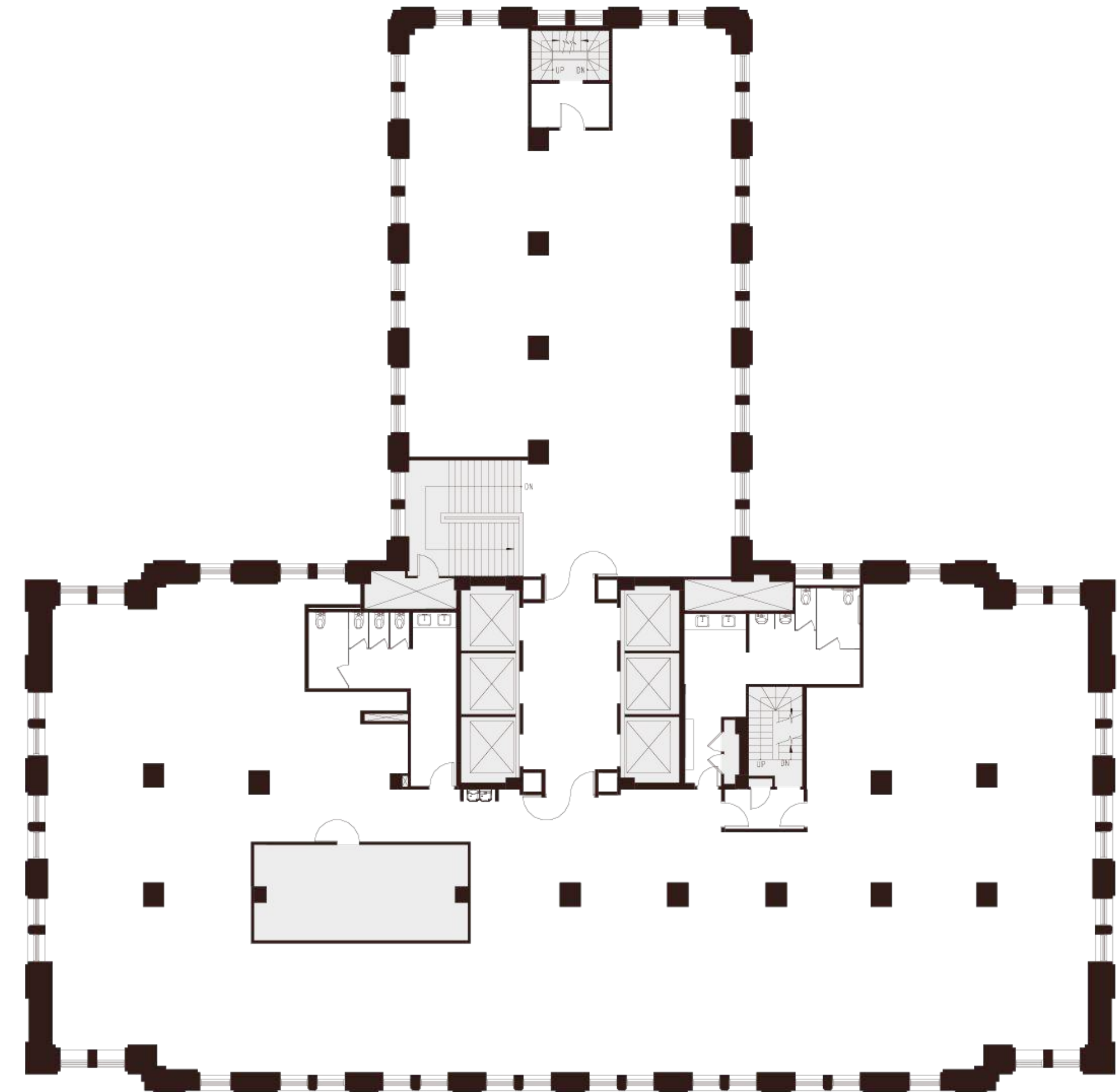
Elena Saccone

Senior Associate

elena.saccone@cushwake.com

+1 (630) 699-9687

Lic. #02151049



Montgomery Street

N



235 Montgomery St. San Francisco, CA 94104



Floor 20

Suite 2000

~11,434 SQFT

High-Rise — Hypothetical Open Office

- 89 Workstations
- 1 Conference Room
- 7 Huddle Rooms
- 4 Phone Rooms
- 1 Break Room
- 1 Copy Room
- 1 Server Room
- 2 Storage Rooms

Mark Anderson

Vice Chairman

mark.anderson@cushwake.com

+1 (415) 713-1014

Lic. #01325399

Danny Pickard

Director

danny.pickard@cushwake.com

+1 (415) 773-3572

Lic. #01975977

Elena Saccone

Senior Associate

elena.saccone@cushwake.com

+1 (630) 699-9687

Lic. #02151049



Montgomery Street



235 Montgomery St. San Francisco, CA 94104



Floor 20

Suite 2000

~11,434 SQFT

High-Rise — Hypothetical Private Office

- 24 Private Offices
- 9 Workstations
- 2 Conference Rooms
- 1 Huddle Room
- 1 Break Room
- 1 Phone Room
- 1 Copy Room
- 1 Server Room
- 2 Storage Rooms

Mark Anderson

Vice Chairman

mark.anderson@cushwake.com

+1 (415) 713-1014

Lic. #01325399

Danny Pickard

Director

danny.pickard@cushwake.com

+1 (415) 773-3572

Lic. #01975977

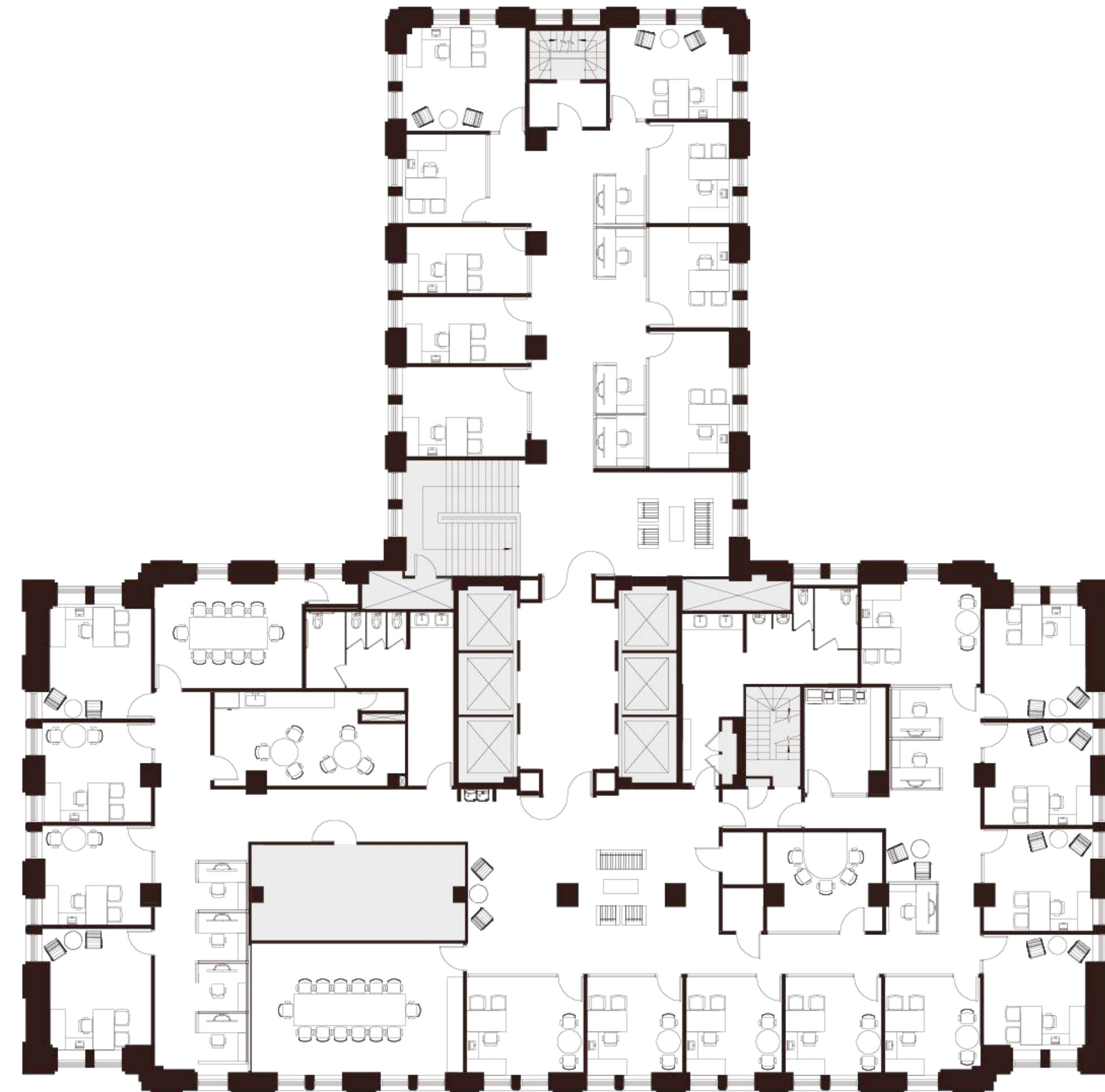
Elena Saccone

Senior Associate

elena.saccone@cushwake.com

+1 (630) 699-9687

Lic. #02151049



Montgomery Street



235 Montgomery St. San Francisco, CA 94104



Floor 22

Suite 2200

~11,545 SQFT

High-Rise — Base Plan

Mark Anderson

Vice Chairman

mark.anderson@cushwake.com

+1 (415) 713-1014

Lic. #01325399

Danny Pickard

Director

danny.pickard@cushwake.com

+1 (415) 773-3572

Lic. #01975977

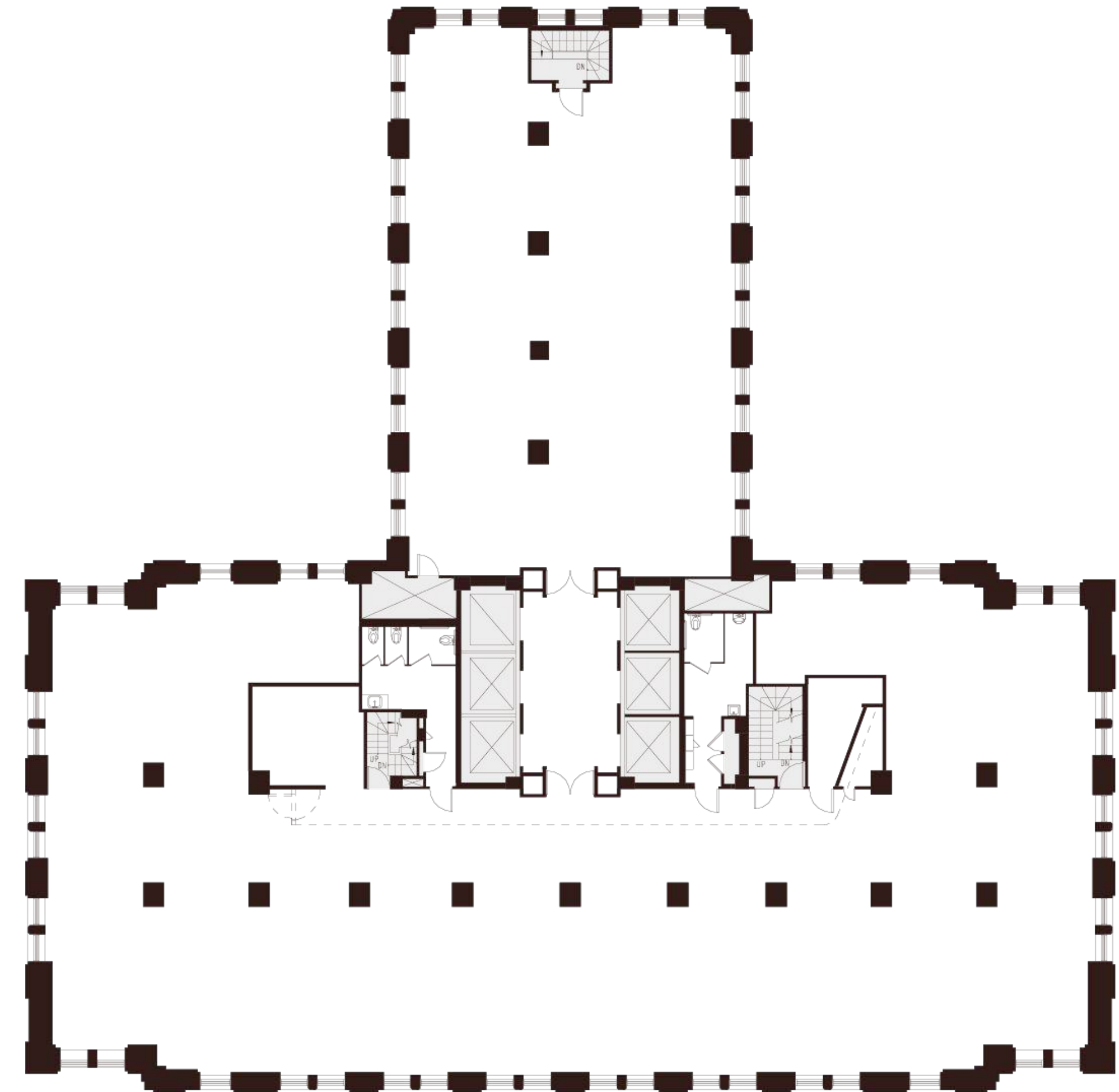
Elena Saccone

Senior Associate

elena.saccone@cushwake.com

+1 (630) 699-9687

Lic. #02151049



Montgomery Street

N



235 Montgomery St. San Francisco, CA 94104



Floor 22

Suite 2200

~11,545 SQFT

High-Rise — Hypothetical Open Office

- 101 Workstations
- 1 Conference Room
- 6 Huddle Rooms
- 2 Phone Rooms
- 1 Break Room
- 1 Copy Area
- 1 Waiting Area
- 1 Server Room

Mark Anderson

Vice Chairman

mark.anderson@cushwake.com

+1 (415) 713-1014

Lic. #01325399

Danny Pickard

Director

danny.pickard@cushwake.com

+1 (415) 773-3572

Lic. #01975977

Elena Saccone

Senior Associate

elena.saccone@cushwake.com

+1 (630) 699-9687

Lic. #02151049



Montgomery Street



235 Montgomery St. San Francisco, CA 94104



Floor 22

Suite 2200

~11,545 SQFT

High-Rise — Hypothetical Private Office

- 20 Private Offices
- 13 Workstations
- 2 Conference Rooms
- 2 Huddle Rooms
- 1 Break Room
- 1 Phone Room
- 1 Copy Room
- 1 Reception Area
- 1 Server Room

Mark Anderson

Vice Chairman

mark.anderson@cushwake.com

+1 (415) 713-1014

Lic. #01325399

Danny Pickard

Director

danny.pickard@cushwake.com

+1 (415) 773-3572

Lic. #01975977

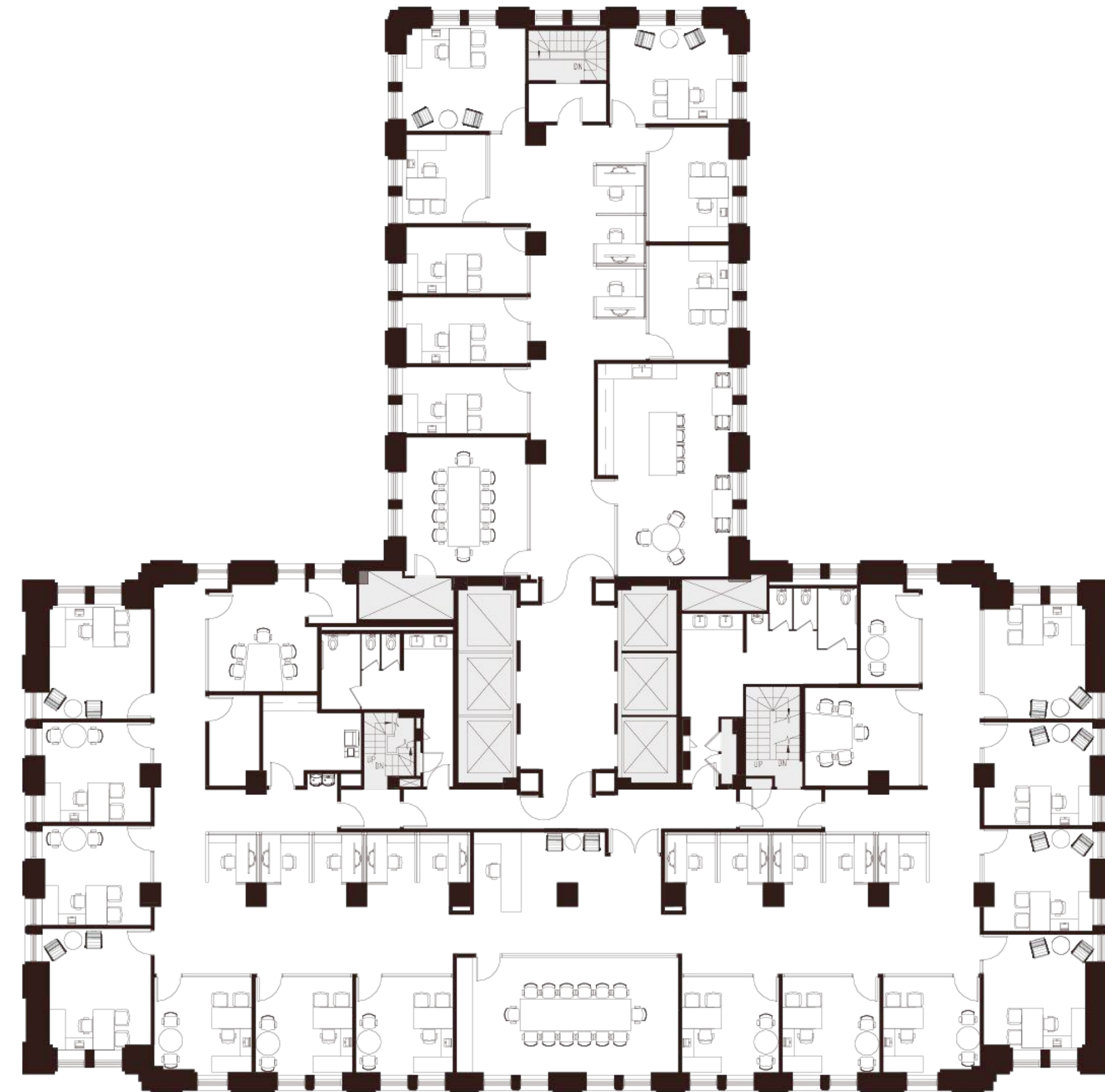
Elena Saccone

Senior Associate

elena.saccone@cushwake.com

+1 (630) 699-9687

Lic. #02151049



Montgomery Street



235 Montgomery St. San Francisco, CA 94104

