

Floor 2

Suite 239

~870 SQFT

Low-Rise — As Built

- 1 Private Office
- 1 Open Work Area
- 1 Restroom
- 2 Storage Closets
- Private Entrance from Pine Street
- Stair Accessible Only

Mark Anderson

Vice Chairman

mark.anderson@cushwake.com

+1 (415) 713-1014

Lic. #01325399

Danny Pickard

Director

danny.pickard@cushwake.com

+1 (415) 773-3572

Lic. #01975977

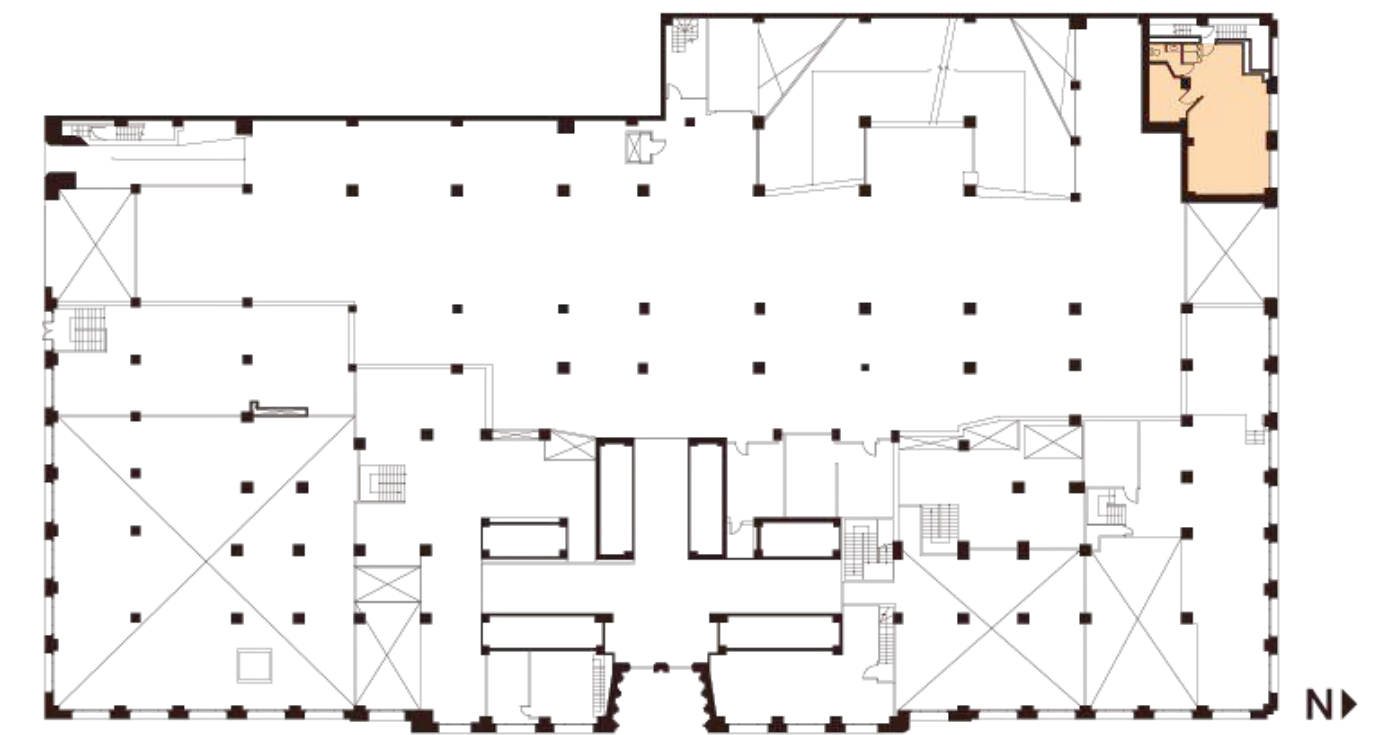
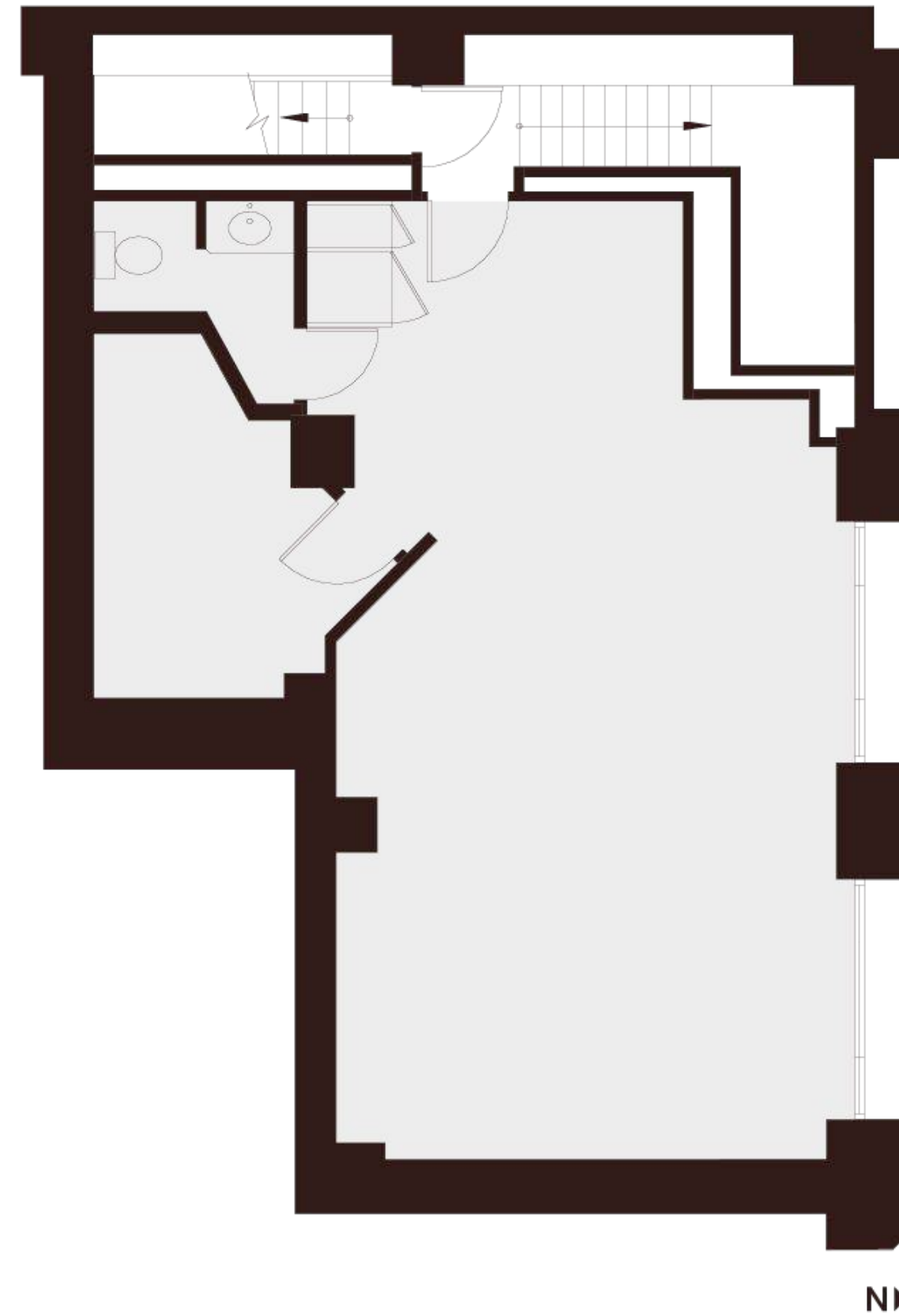
Elena Saccone

Senior Associate

elena.saccone@cushwake.com

+1 (630) 699-9687

Lic. #02151049



235 Montgomery St. San Francisco, CA 94104



Floor 4

Suite 455

~1697 SQFT

Low-Rise — As Built

- 4 Window Line Private Offices
- 1 Open Work Area
- 1 Coffee Station
- 1 Reception Area
- 1 Server Closet
- 1 Window Line Conference Room

Mark Anderson

Vice Chairman

mark.anderson@cushwake.com

+1 (415) 713-1014

Lic. #01325399

Danny Pickard

Director

danny.pickard@cushwake.com

+1 (415) 773-3572

Lic. #01975977

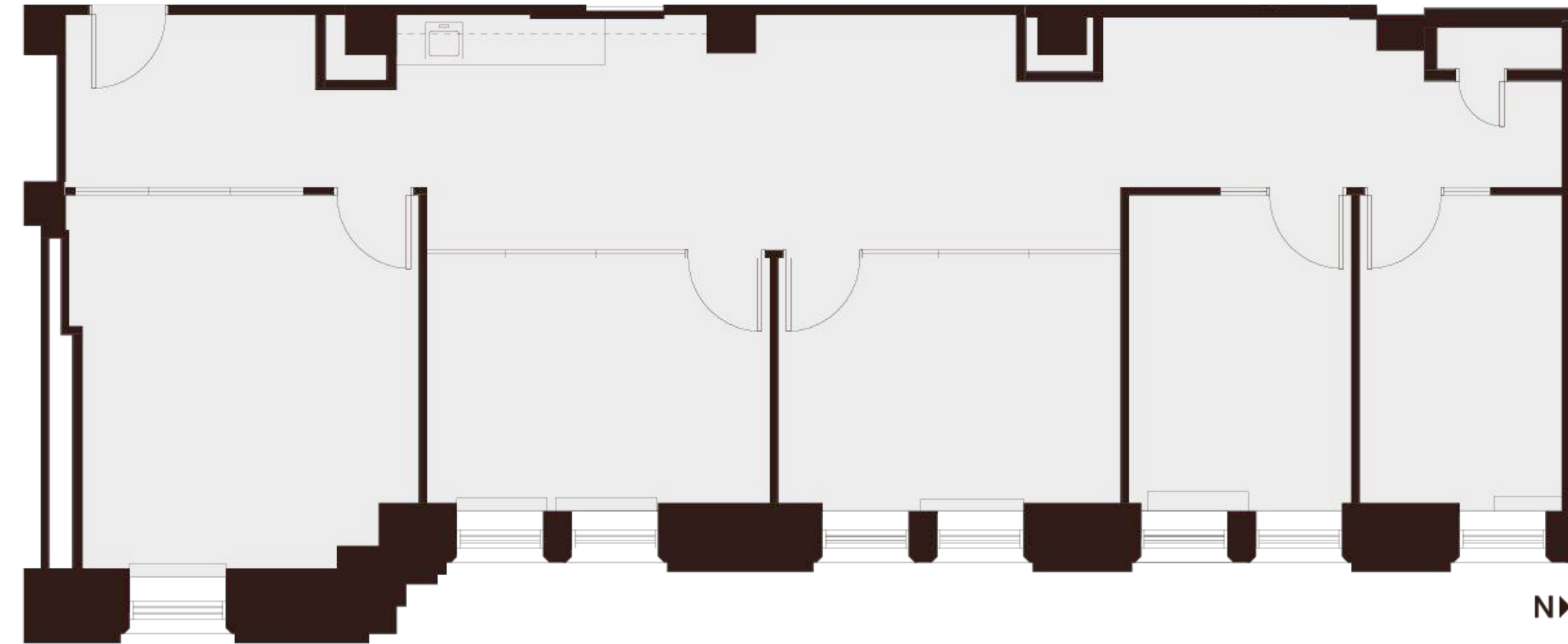
Elena Saccone

Senior Associate

elena.saccone@cushwake.com

+1 (630) 699-9687

Lic. #02151049



Montgomery Street



235 Montgomery St. San Francisco, CA 94104



Floor 6

Suite 624

~678 SQFT

Low-Rise — As Built

- 2 Window Line Offices

Mark Anderson

Vice Chairman

mark.anderson@cushwake.com

+1 (415) 713-1014

Lic. #01325399

Danny Pickard

Director

danny.pickard@cushwake.com

+1 (415) 773-3572

Lic. #01975977

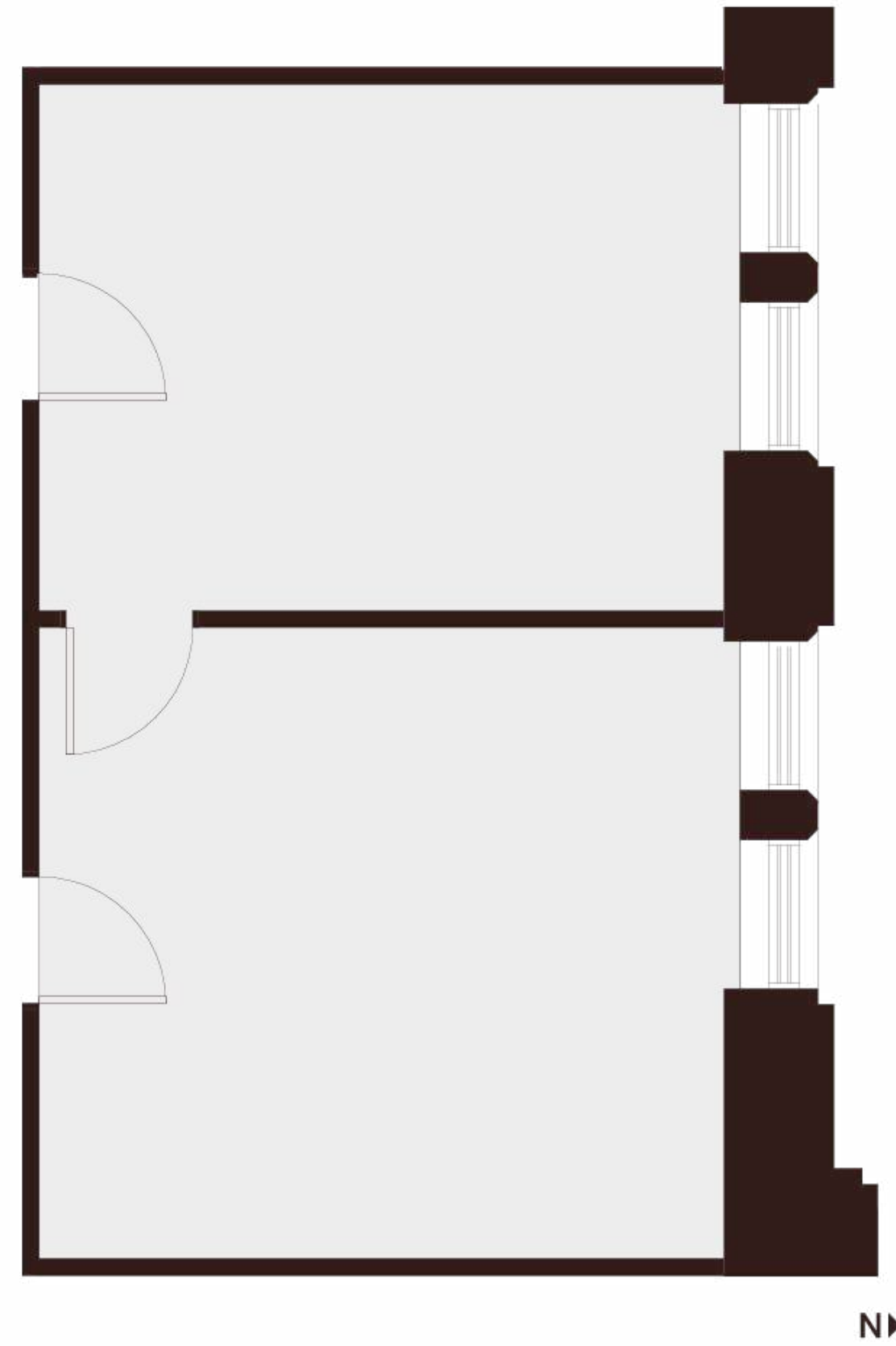
Elena Saccone

Senior Associate

elena.saccone@cushwake.com

+1 (630) 699-9687

Lic. #02151049



Montgomery Street



235 Montgomery St. San Francisco, CA 94104



Floor 7

Suite 711

~2,184 SQFT

Low-Rise — As Built

- 4 Private Offices
- 1 Open Huddle Area
- 1 Copy / Break Room
- 1 Conference Room

Mark Anderson

Vice Chairman

mark.anderson@cushwake.com

+1 (415) 713-1014

Lic. #01325399

Danny Pickard

Director

danny.pickard@cushwake.com

+1 (415) 773-3572

Lic. #01975977

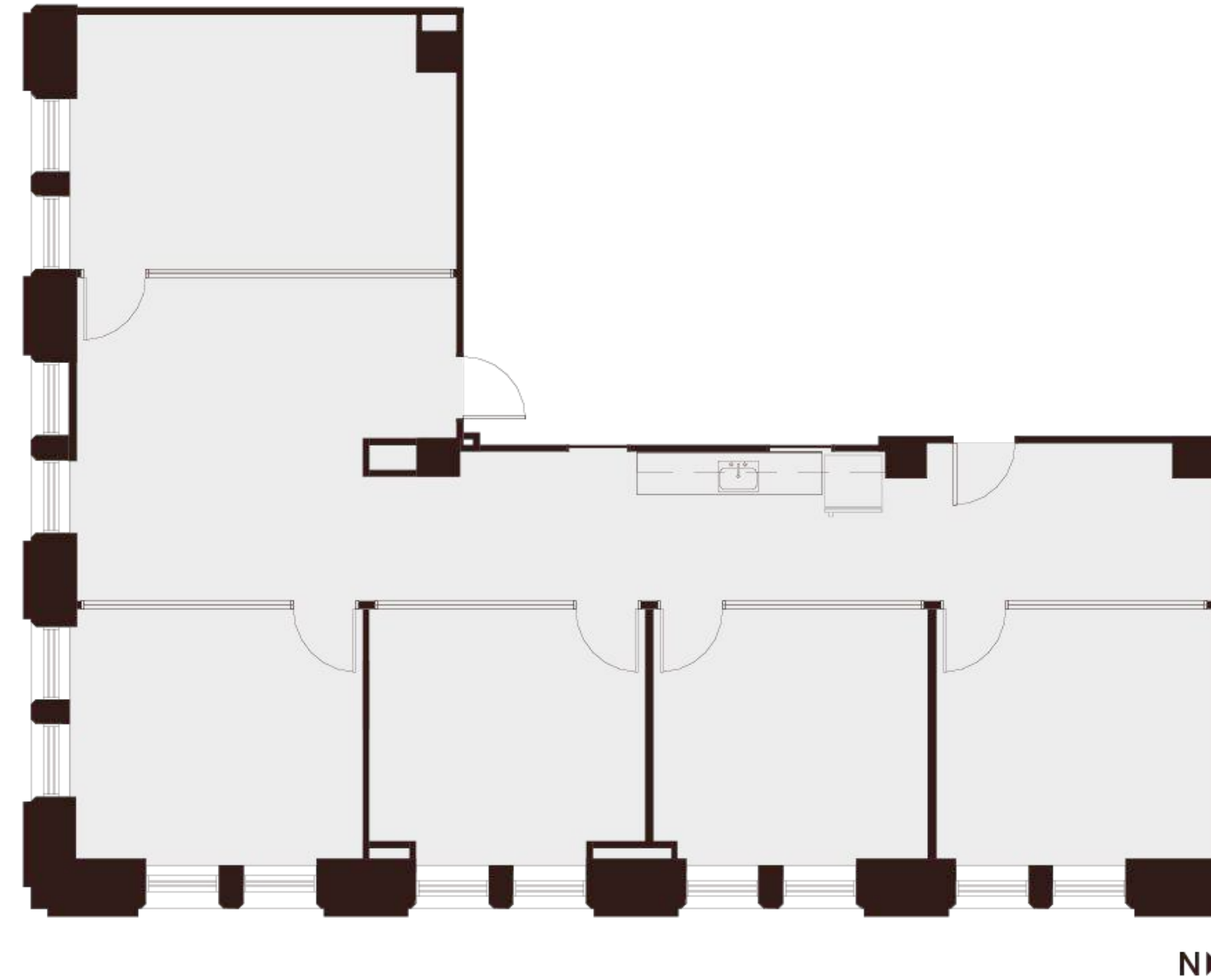
Elena Saccone

Senior Associate

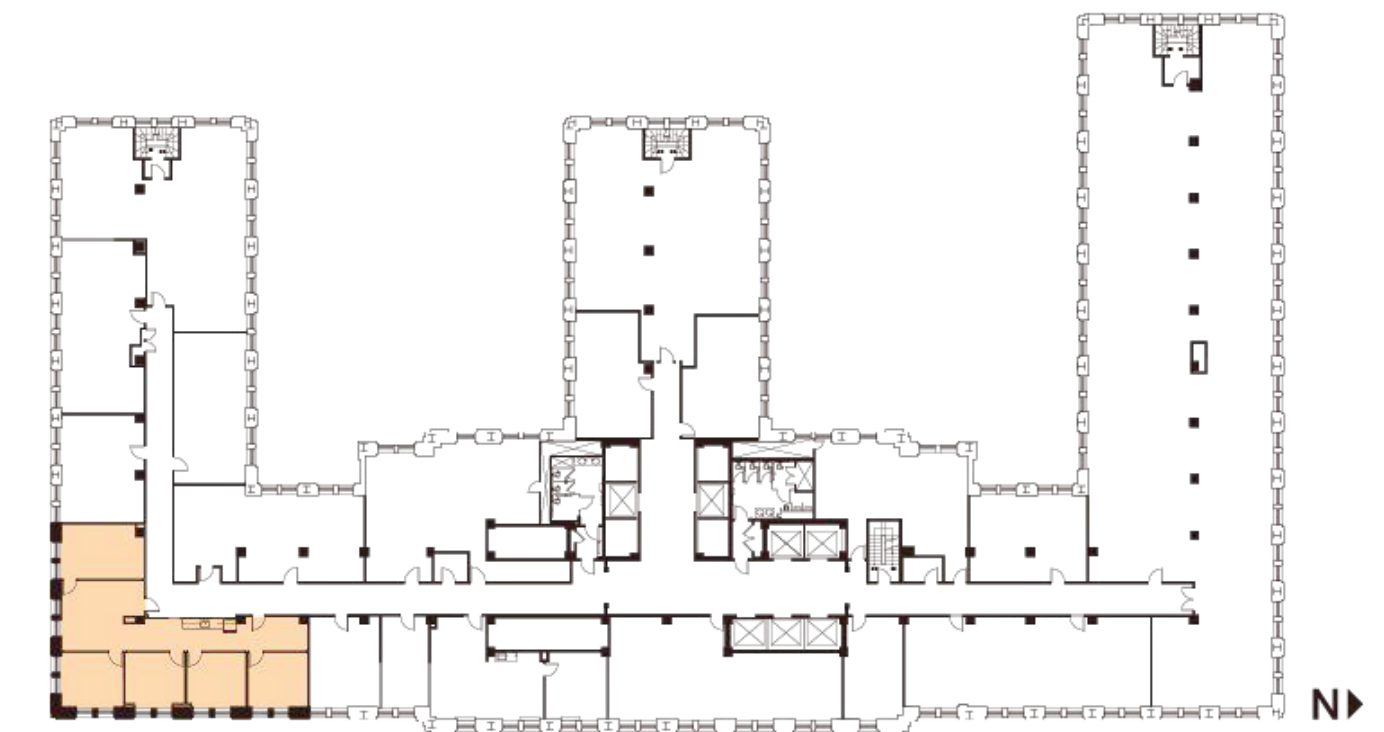
elena.saccone@cushwake.com

+1 (630) 699-9687

Lic. #02151049



N



Montgomery Street



235 Montgomery St. San Francisco, CA 94104



Floor 7

Suite 725

~1,547 SQFT

Low-Rise — As Built

- 2 Window Line Offices
- 1 Open Work Area with Sink & Cabinetry
- 1 Open Work Area
- 1 Server / Storage Room
- 1 Window Line Conference Room

Mark Anderson

Vice Chairman

mark.anderson@cushwake.com

+1 (415) 713-1014

Lic. #01325399

Danny Pickard

Director

danny.pickard@cushwake.com

+1 (415) 773-3572

Lic. #01975977

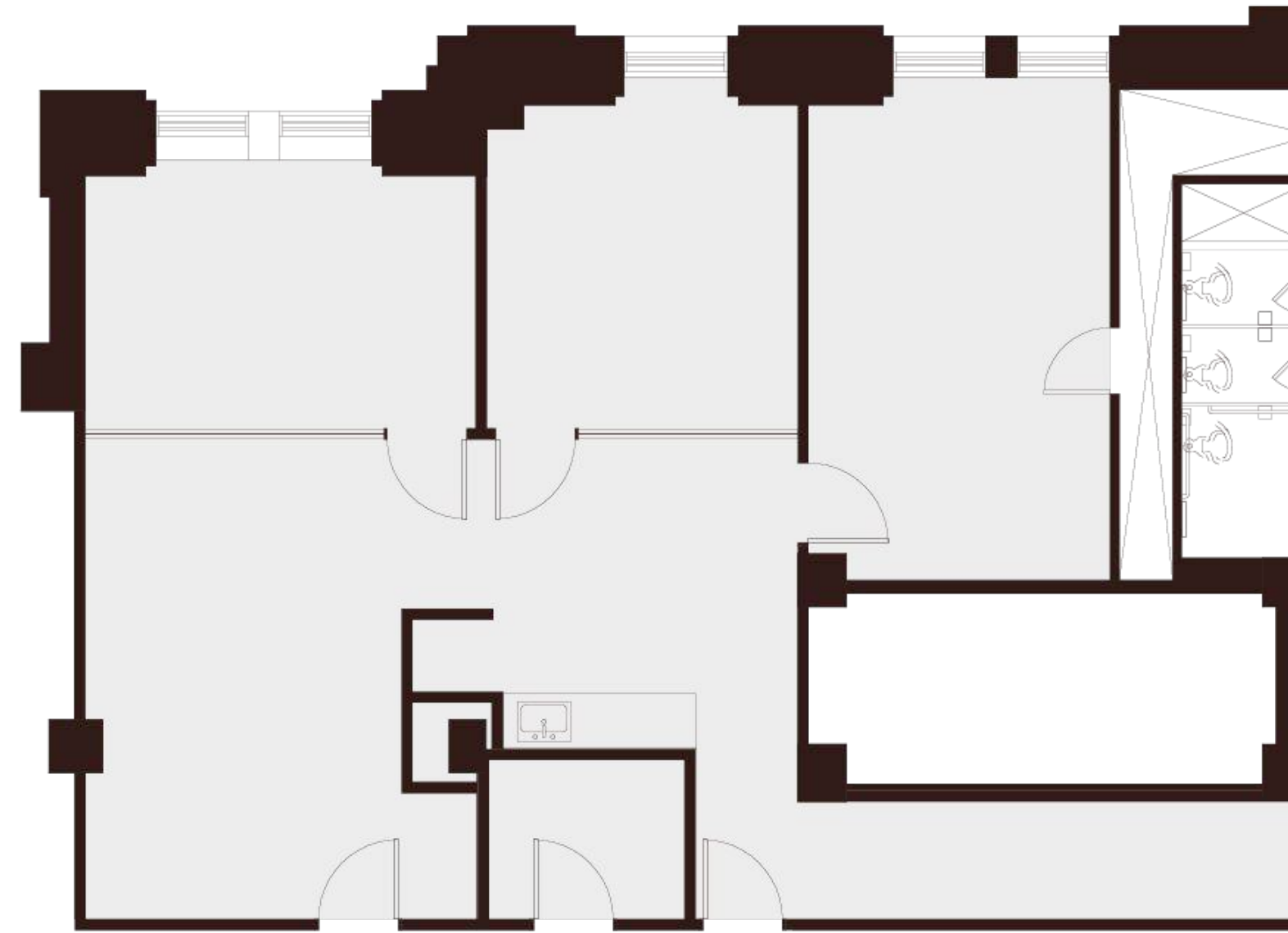
Elena Saccone

Senior Associate

elena.saccone@cushwake.com

+1 (630) 699-9687

Lic. #02151049



N▶



Montgomery Street



235 Montgomery St. San Francisco, CA 94104



Floor 8

Suite 838

~368 SQFT

Low-Rise — As Built

- 1 Large Open Work Area

Mark Anderson

Vice Chairman

mark.anderson@cushwake.com

+1 (415) 713-1014

Lic. #01325399

Danny Pickard

Director

danny.pickard@cushwake.com

+1 (415) 773-3572

Lic. #01975977

Elena Saccone

Senior Associate

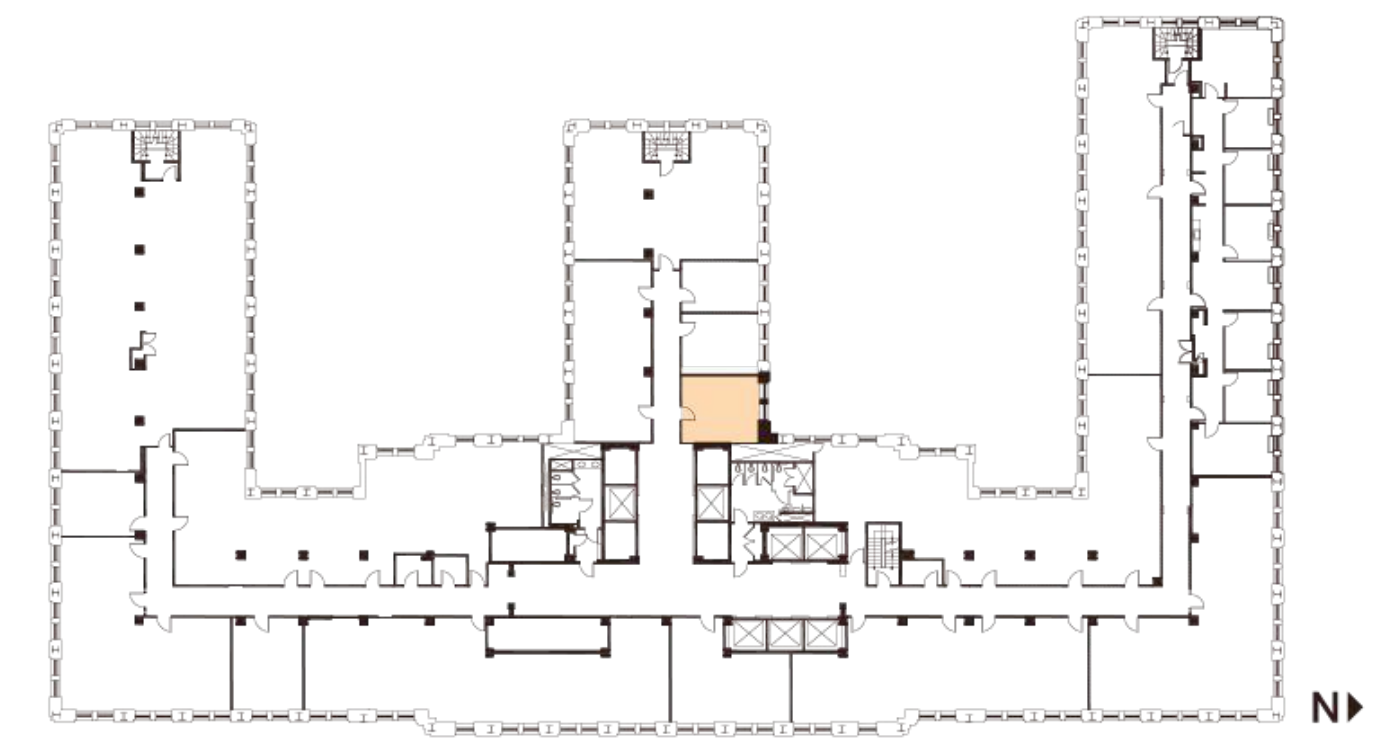
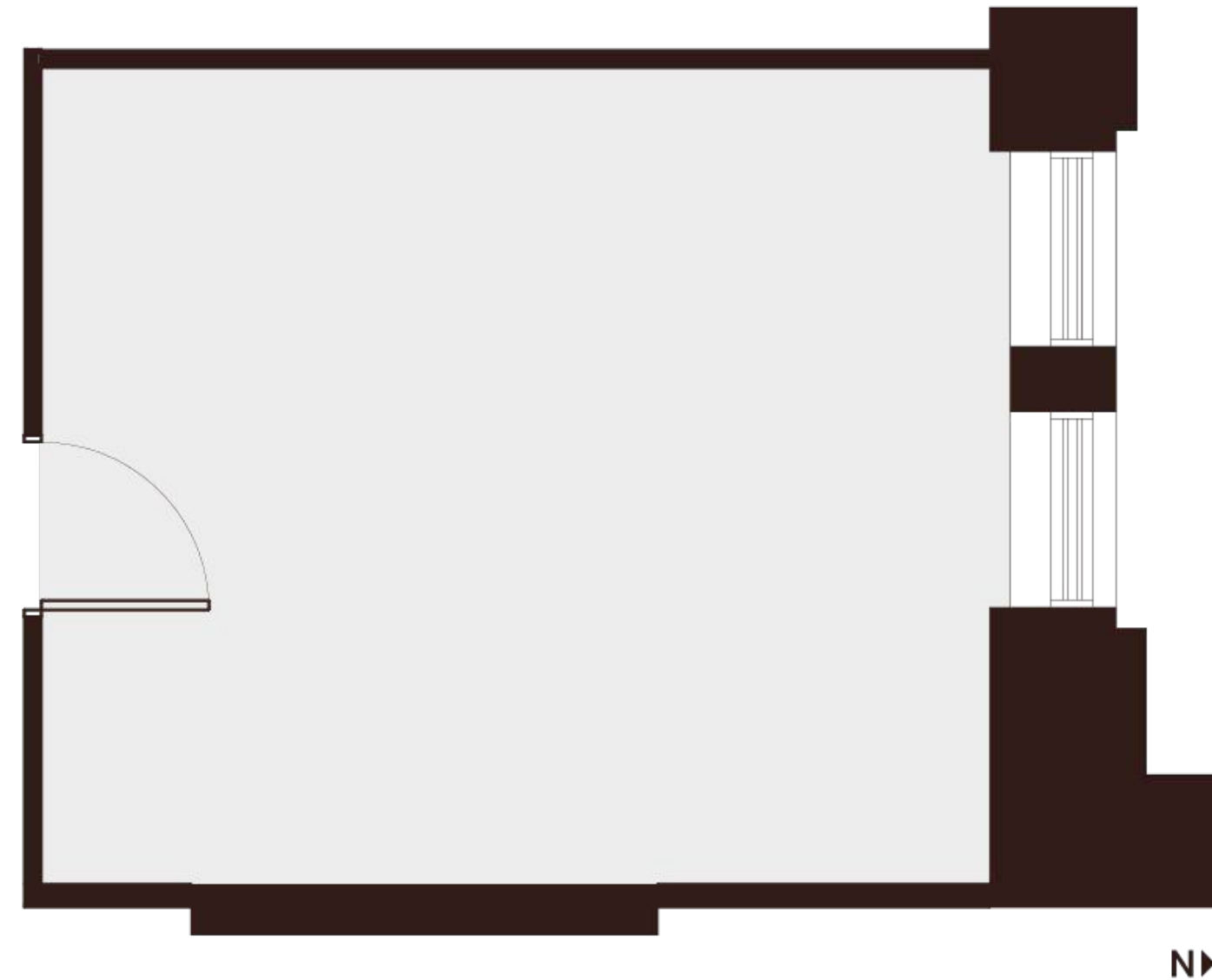
elena.saccone@cushwake.com

+1 (630) 699-9687

Lic. #02151049



235 Montgomery St. San Francisco, CA 94104



Montgomery Street

Floor 8

Suite 850

~1,906 SQFT

Low-Rise — As Built

- 4 Window Line Offices
- 1 Large Conference Room
- 1 Reception / Open Work Area
- 1 Break / Copy Area
- 1 Large Storage Closet

Mark Anderson

Vice Chairman

mark.anderson@cushwake.com

+1 (415) 713-1014

Lic. #01325399

Danny Pickard

Director

danny.pickard@cushwake.com

+1 (415) 773-3572

Lic. #01975977

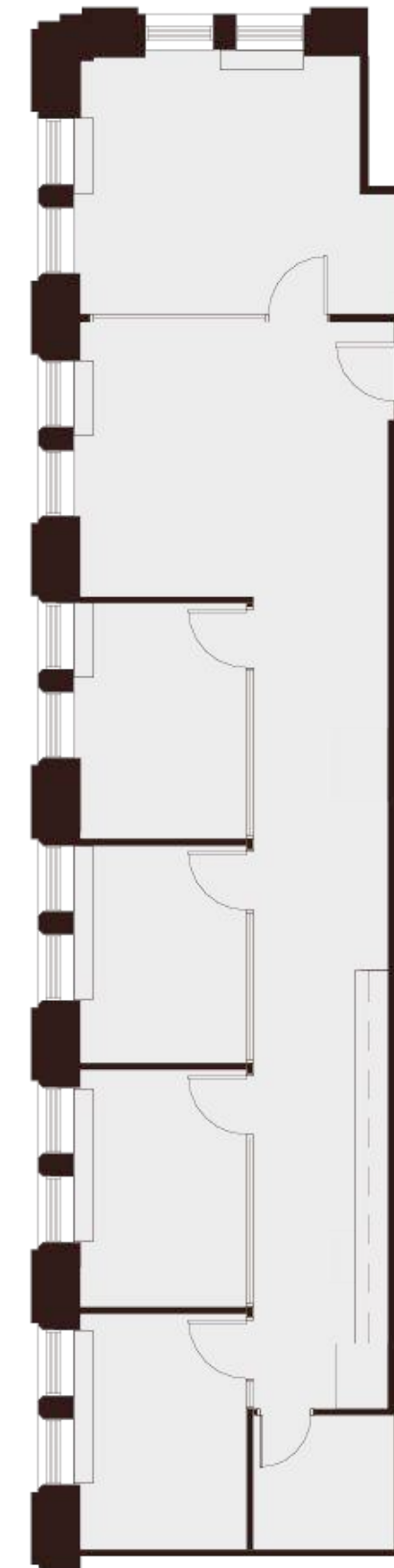
Elena Saccone

Senior Associate

elena.saccone@cushwake.com

+1 (630) 699-9687

Lic. #02151049



N▶



Montgomery Street



235 Montgomery St. San Francisco, CA 94104



Floor 9

Suite 948

~1,725 SQFT

Low-Rise — As Built

- 2 Private Offices
- 1 Open Office Area
- 1 Conference Room
- 1 Break Area
- 1 Reception Area

Mark Anderson

Vice Chairman

mark.anderson@cushwake.com

+1 (415) 713-1014

Lic. #01325399

Danny Pickard

Director

danny.pickard@cushwake.com

+1 (415) 773-3572

Lic. #01975977

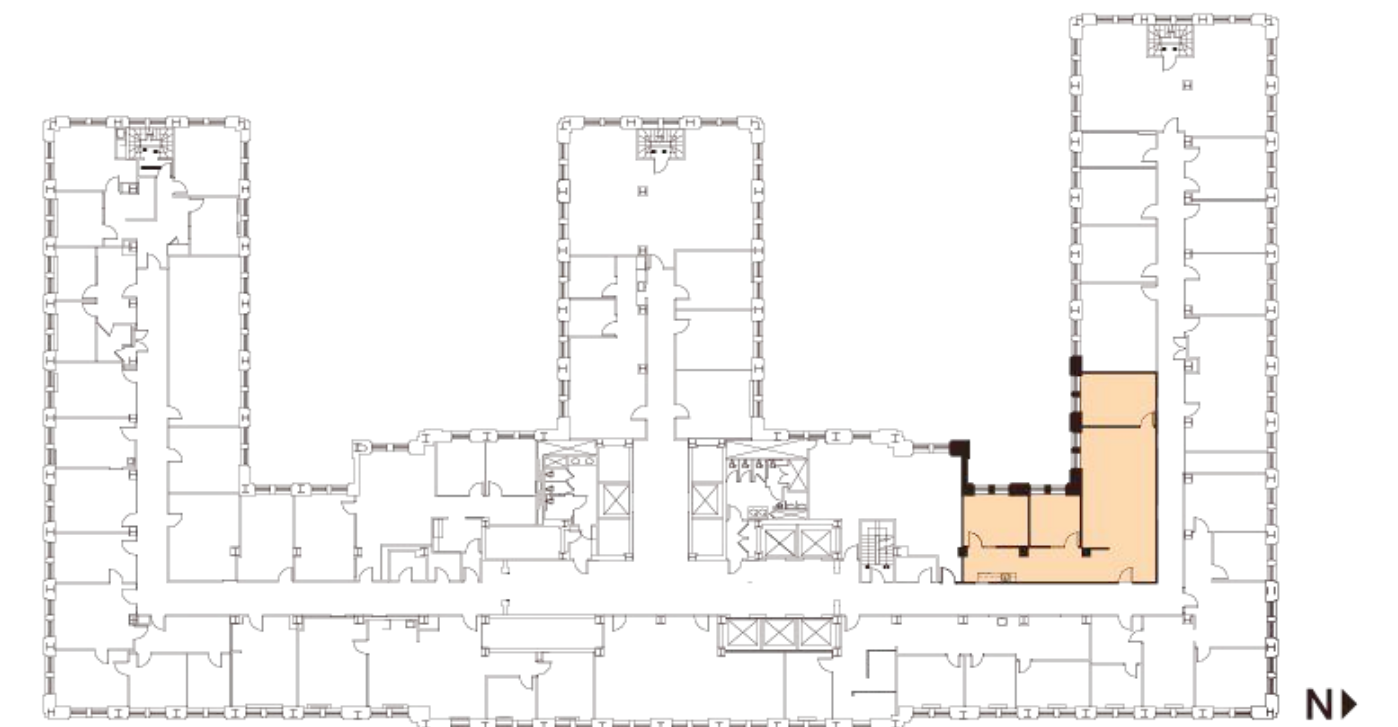
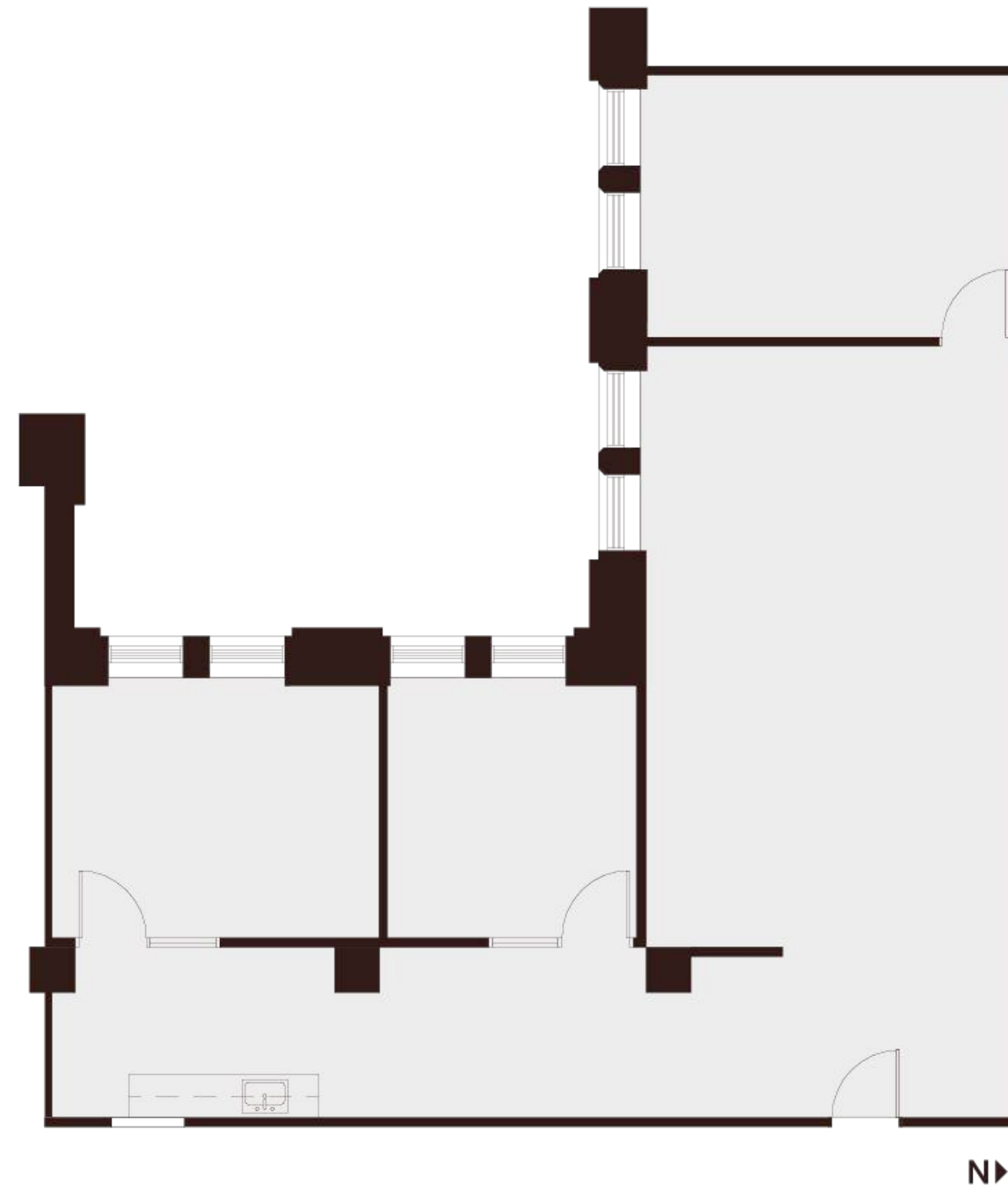
Elena Saccone

Senior Associate

elena.saccone@cushwake.com

+1 (630) 699-9687

Lic. #02151049



Montgomery Street



235 Montgomery St. San Francisco, CA 94104



Floor 9

Suite 960

~1,357 SQFT

Low-Rise — As Built

- 3 Window Line Offices
- 1 Conference Room
- 1 Open Work Area
- 1 Break Room
- 1 Server Closet

Mark Anderson

Vice Chairman

mark.anderson@cushwake.com

+1 (415) 713-1014

Lic. #01325399

Danny Pickard

Director

danny.pickard@cushwake.com

+1 (415) 773-3572

Lic. #01975977

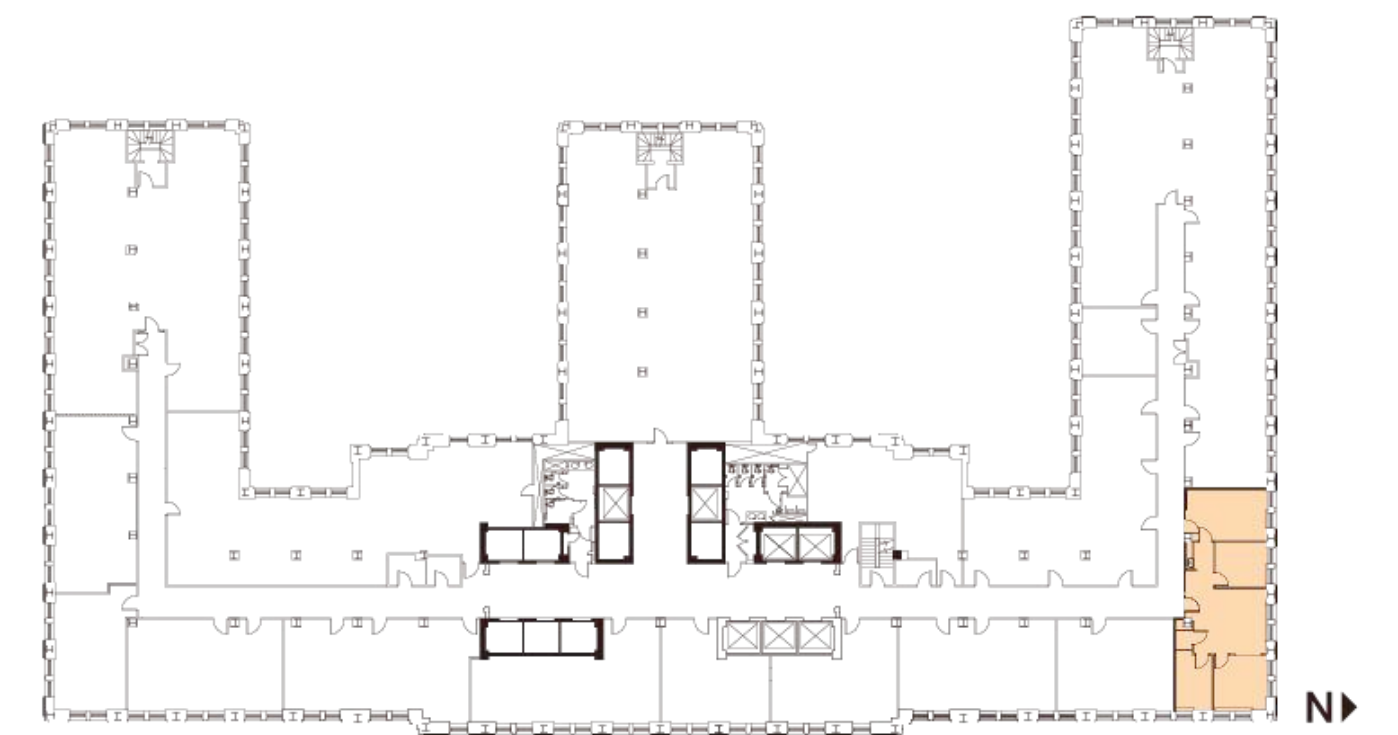
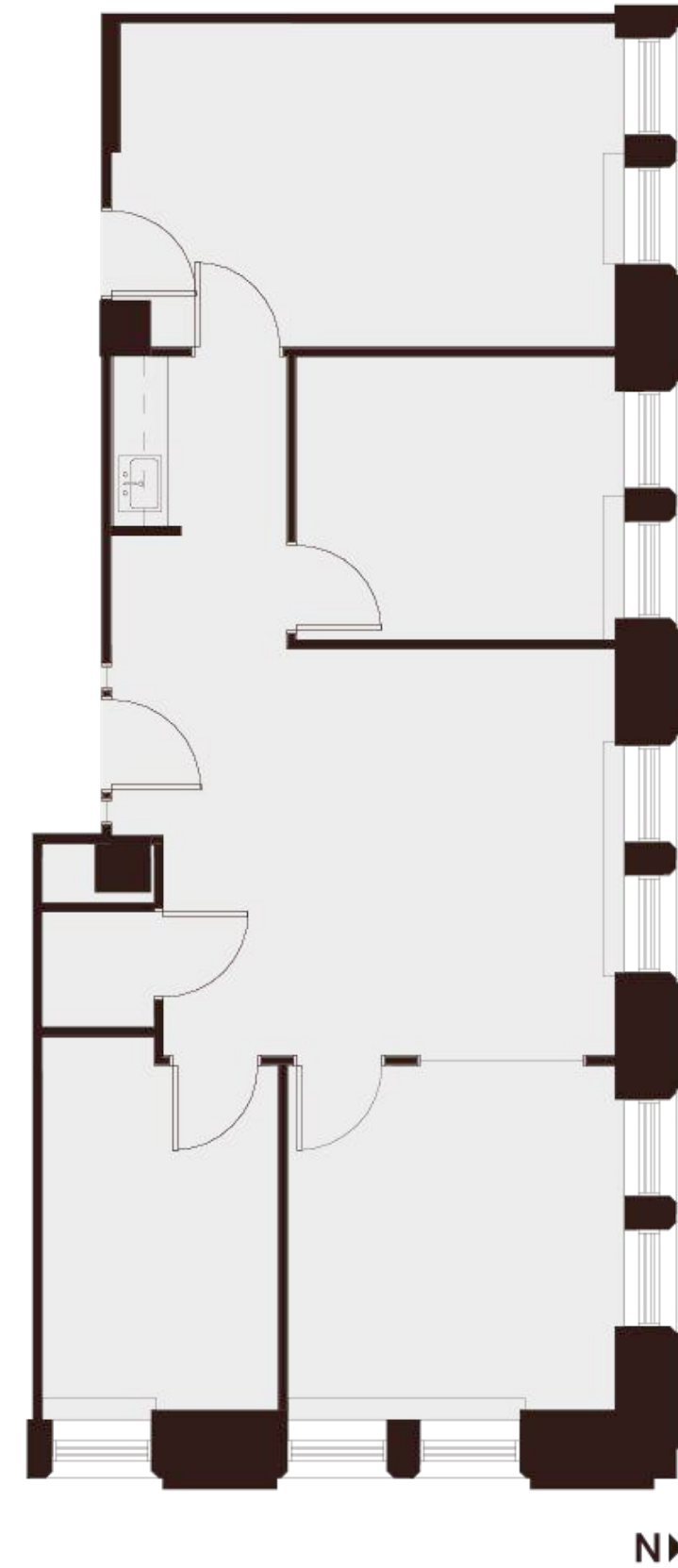
Elena Saccone

Senior Associate

elena.saccone@cushwake.com

+1 (630) 699-9687

Lic. #02151049



Montgomery Street



235 Montgomery St. San Francisco, CA 94104



Floor 9

Suite 967

~1,012 SQFT

Low-Rise — As Built

- 2 Private Offices
- 1 Open Work Area
- 1 Huddle Room
- 1 Break Room

Mark Anderson

Vice Chairman

mark.anderson@cushwake.com

+1 (415) 713-1014

Lic. #01325399

Danny Pickard

Director

danny.pickard@cushwake.com

+1 (415) 773-3572

Lic. #01975977

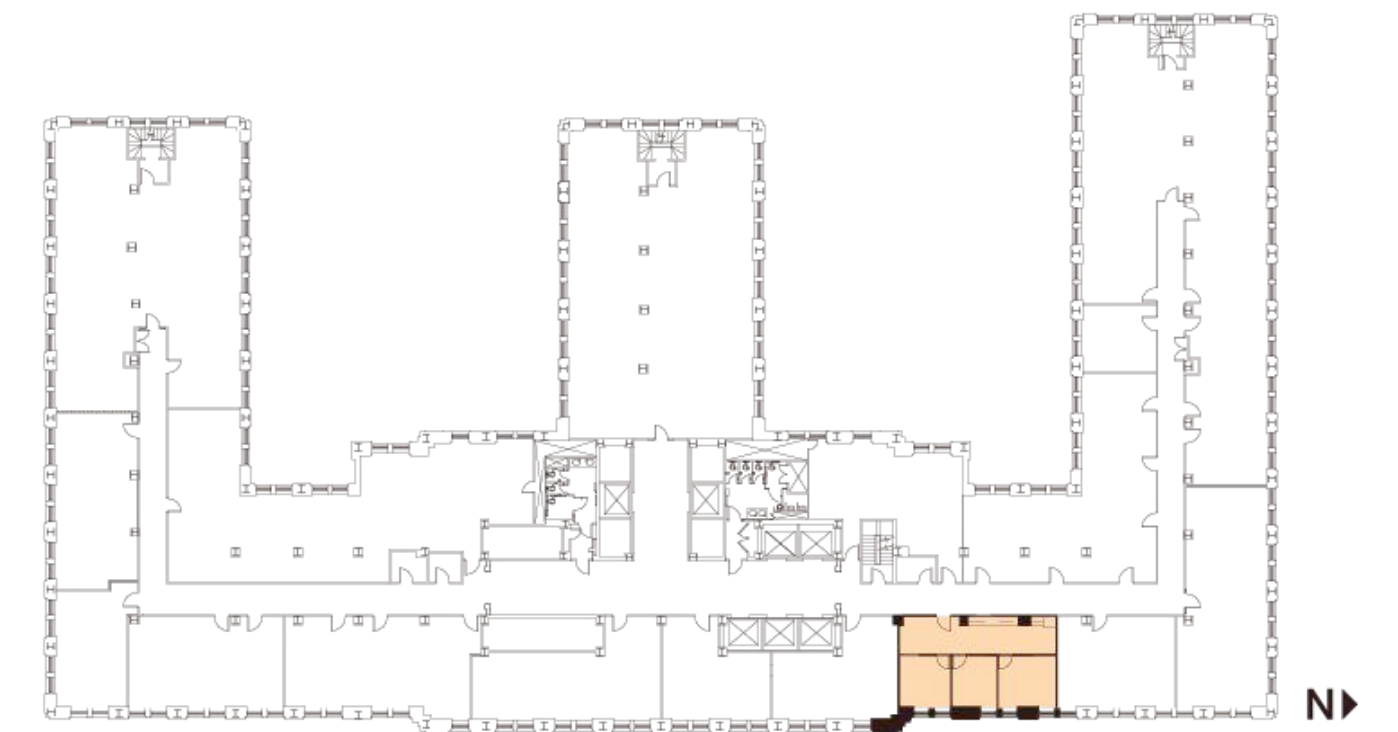
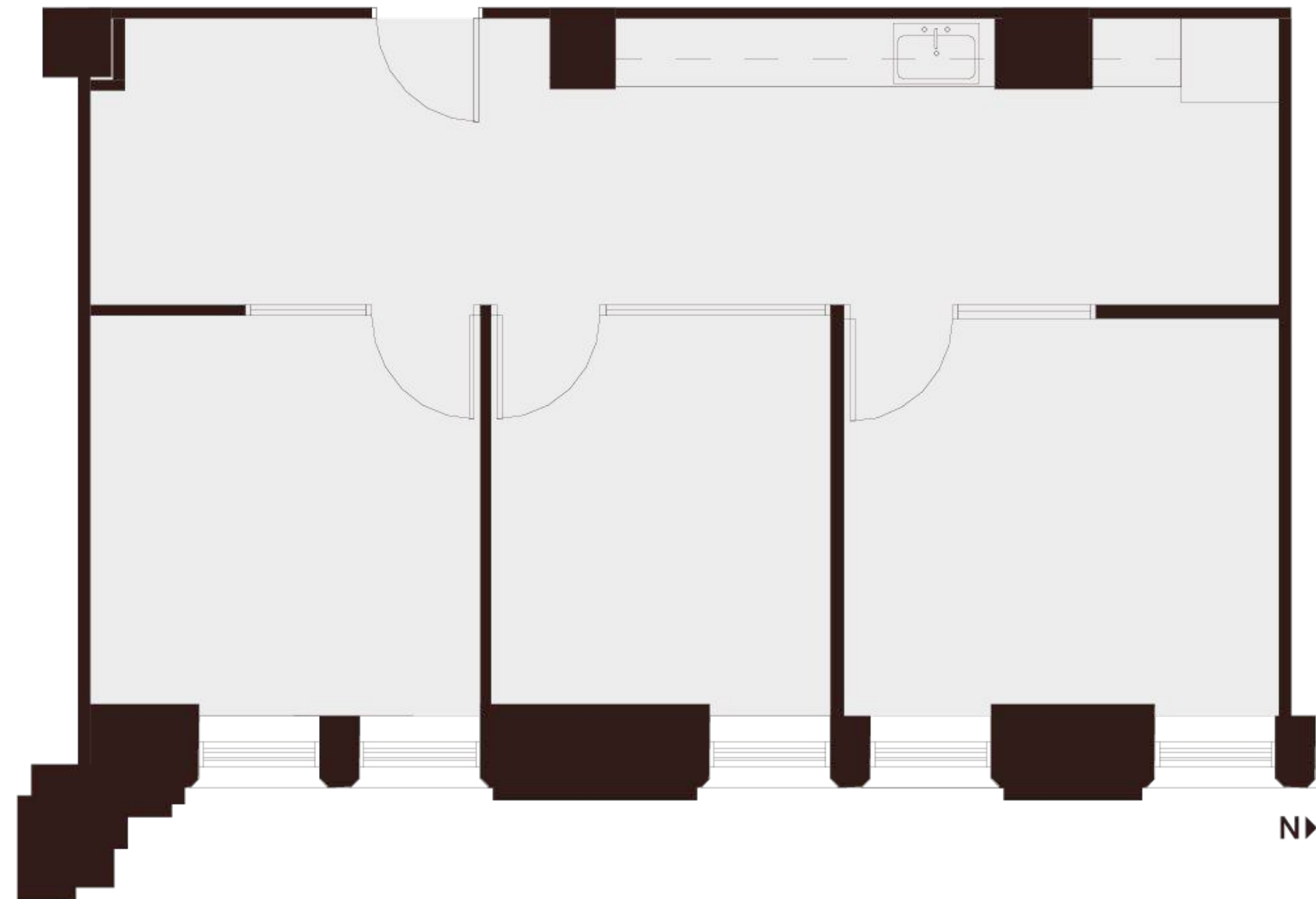
Elena Saccone

Senior Associate

elena.saccone@cushwake.com

+1 (630) 699-9687

Lic. #02151049



235 Montgomery St. San Francisco, CA 94104



Floor 10

Suite 1026

~1,345 SQFT

Low-Rise — As Built

- 2 Private Offices
- 1 Open Work Area
- 1 Break Area
- 1 Storage Room

Mark Anderson

Vice Chairman

mark.anderson@cushwake.com

+1 (415) 713-1014

Lic. #01325399

Danny Pickard

Director

danny.pickard@cushwake.com

+1 (415) 773-3572

Lic. #01975977

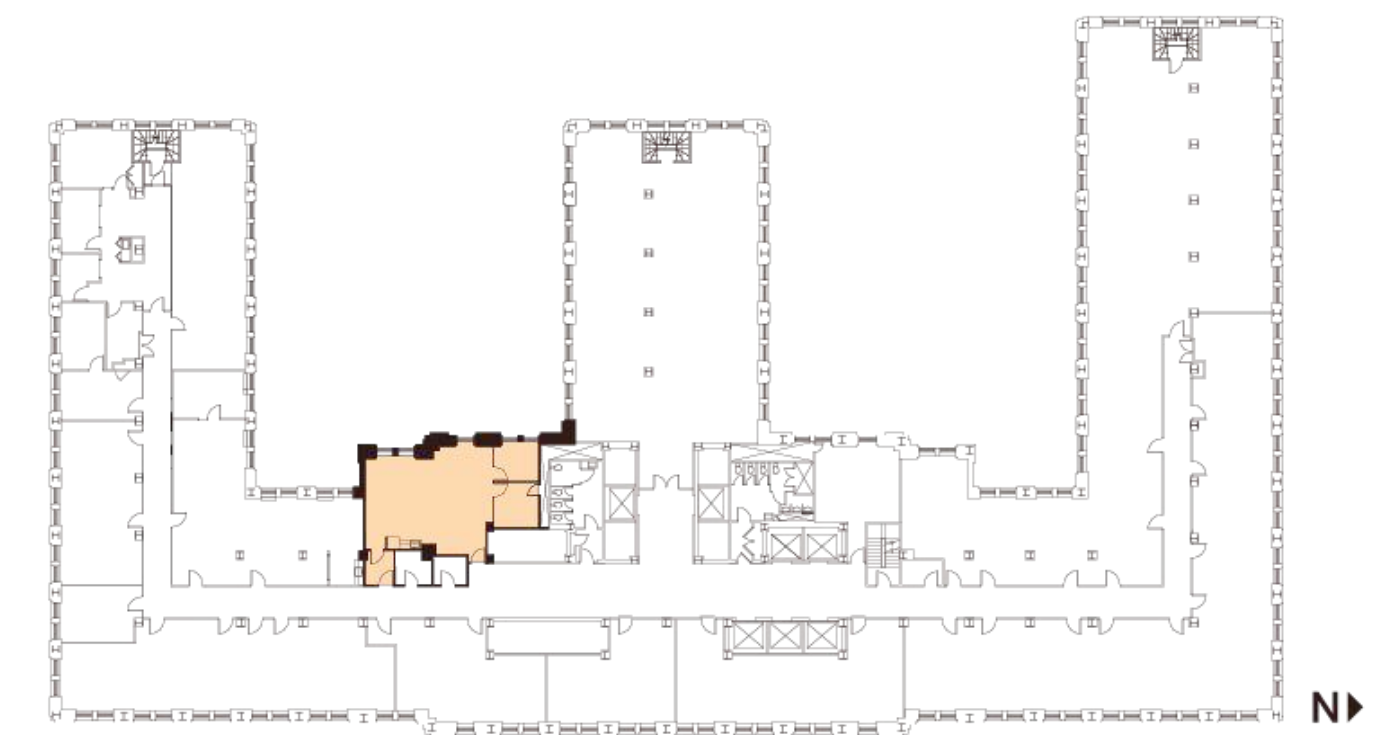
Elena Saccone

Senior Associate

elena.saccone@cushwake.com

+1 (630) 699-9687

Lic. #02151049



Montgomery Street



235 Montgomery St. San Francisco, CA 94104



Floor 10

Suite 1060

~1,199 SQFT

Low-Rise — As Built

- 4 Private Offices
- 1 Break Area

Mark Anderson

Vice Chairman

mark.anderson@cushwake.com

+1 (415) 713-1014

Lic. #01325399

Danny Pickard

Director

danny.pickard@cushwake.com

+1 (415) 773-3572

Lic. #01975977

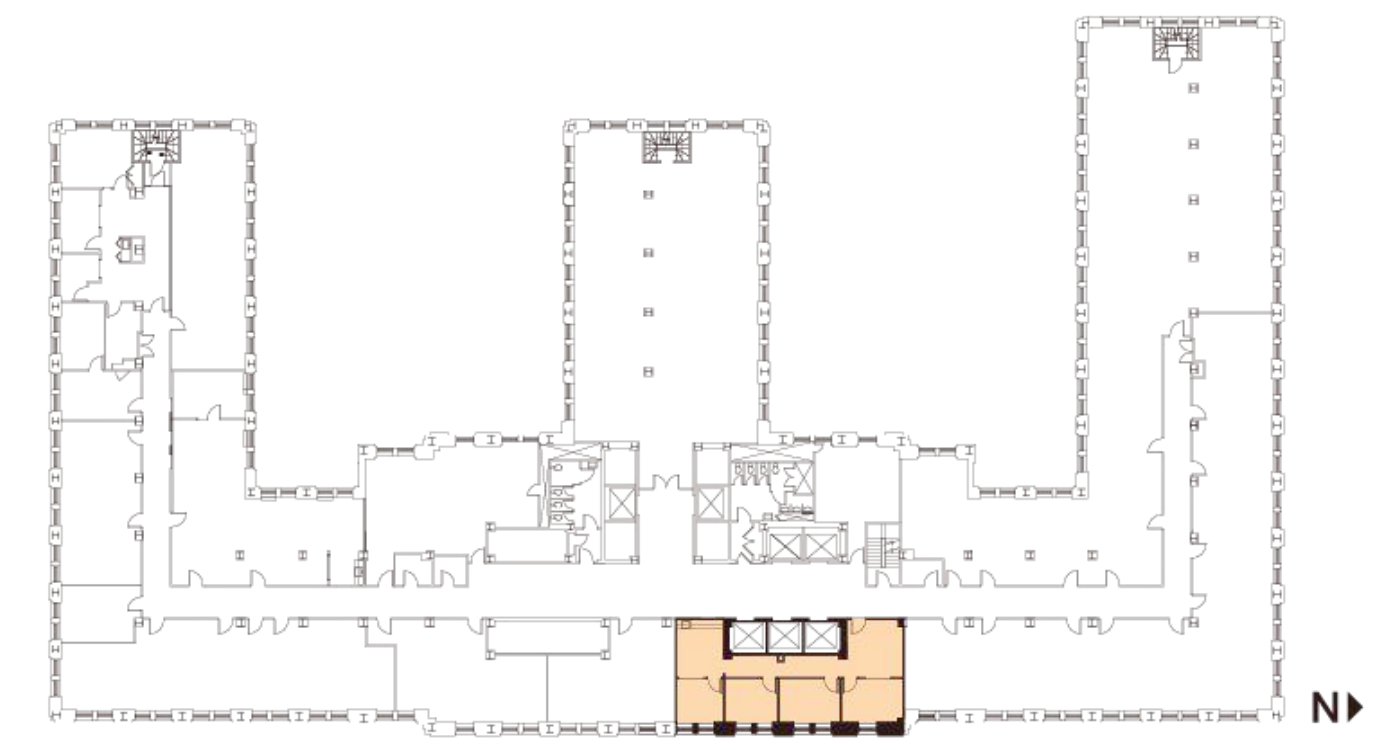
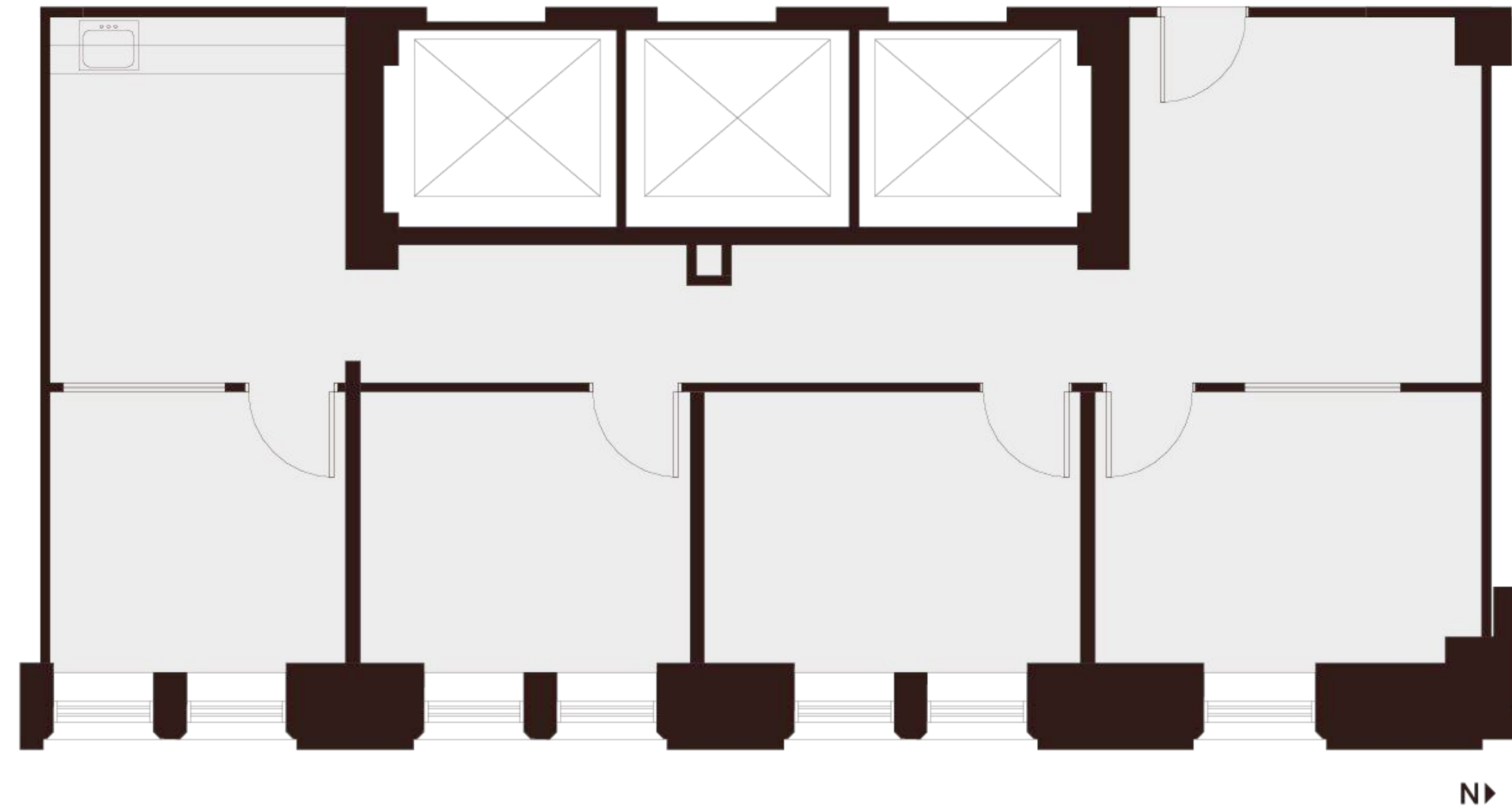
Elena Saccone

Senior Associate

elena.saccone@cushwake.com

+1 (630) 699-9687

Lic. #02151049



Montgomery Street



235 Montgomery St. San Francisco, CA 94104



Floor 10

Suite 1070

~704 SQFT

Low-Rise — As Built

- 1 Open Work Area
- 1 Break Area

Mark Anderson

Vice Chairman

mark.anderson@cushwake.com

+1 (415) 713-1014

Lic. #01325399

Danny Pickard

Director

danny.pickard@cushwake.com

+1 (415) 773-3572

Lic. #01975977

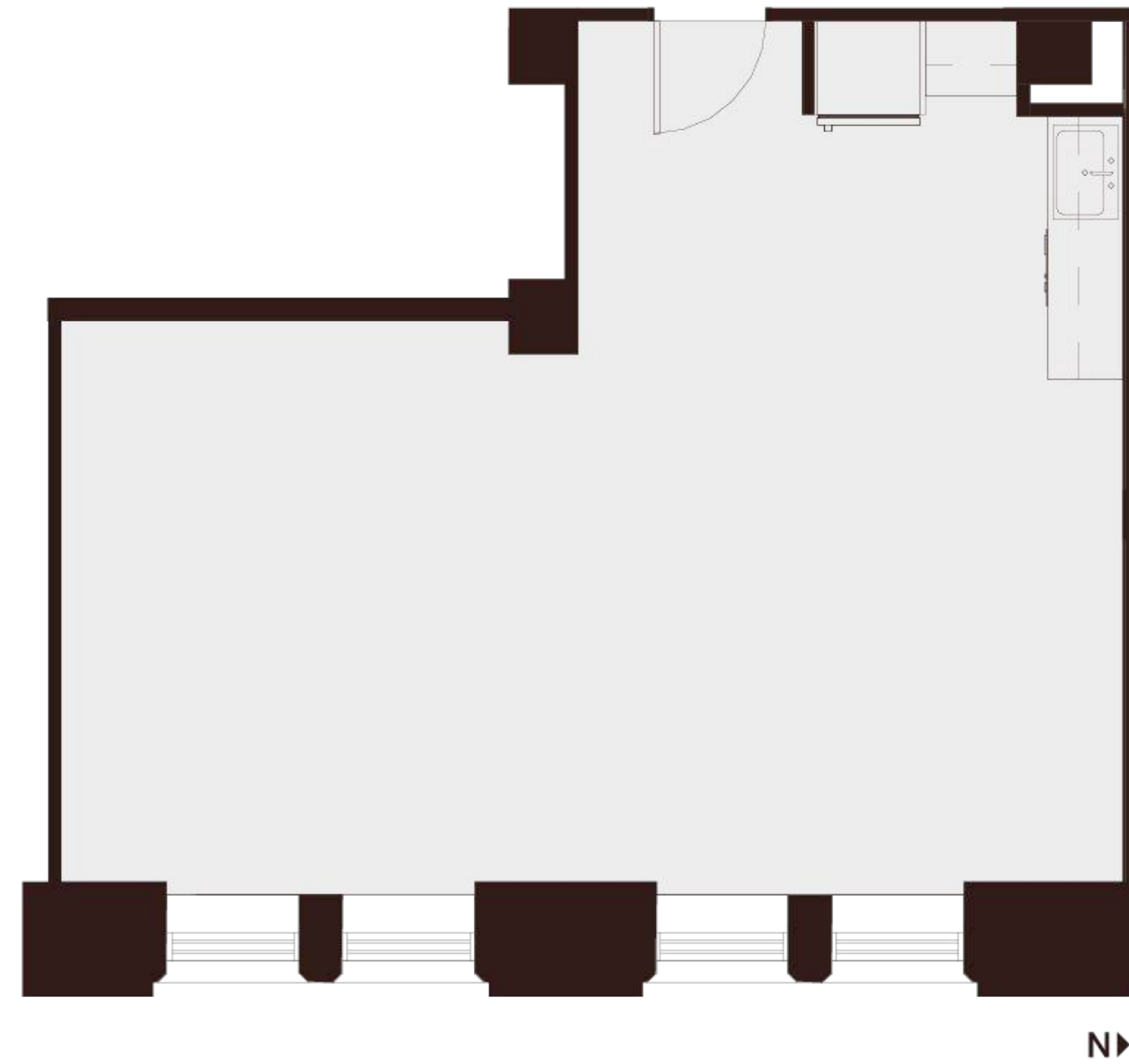
Elena Saccone

Senior Associate

elena.saccone@cushwake.com

+1 (630) 699-9687

Lic. #02151049



N▶



Montgomery Street



235 Montgomery St. San Francisco, CA 94104



Floor 11

Suite 1106

~490 SQFT

Mid-Rise — As Built

- Charming, one-room suite overlooking Montgomery Street

Mark Anderson

Vice Chairman

mark.anderson@cushwake.com

+1 (415) 713-1014

Lic. #01325399

Danny Pickard

Director

danny.pickard@cushwake.com

+1 (415) 773-3572

Lic. #01975977

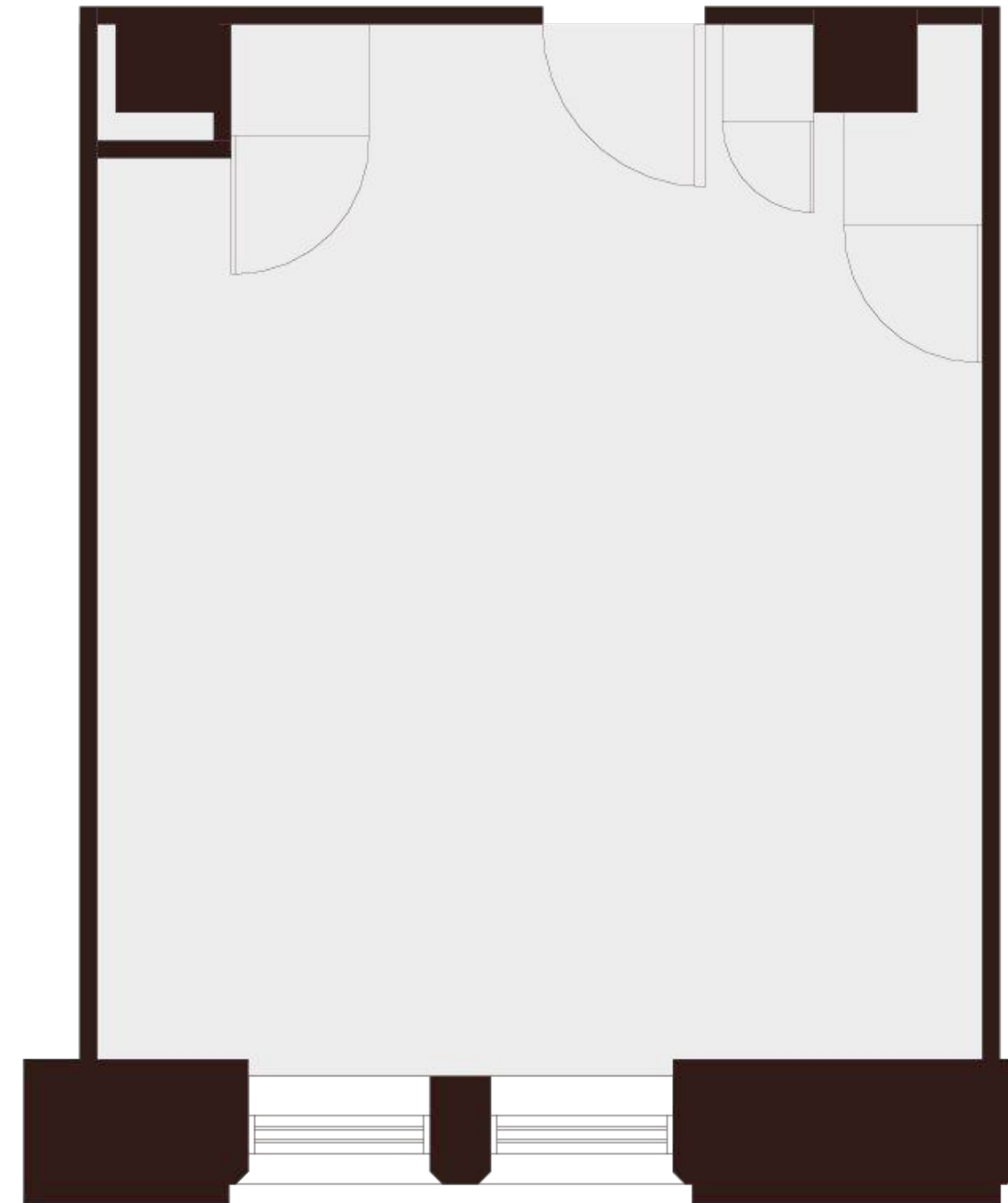
Elena Saccone

Senior Associate

elena.saccone@cushwake.com

+1 (630) 699-9687

Lic. #02151049



N▶



Montgomery Street

N▶



235 Montgomery St. San Francisco, CA 94104



Floor 11

Suite 1140

~457 SQFT

Mid-Rise — As Built

- Large window line one-room suite facing west.

Mark Anderson

Vice Chairman

mark.anderson@cushwake.com

+1 (415) 713-1014

Lic. #01325399

Danny Pickard

Director

danny.pickard@cushwake.com

+1 (415) 773-3572

Lic. #01975977

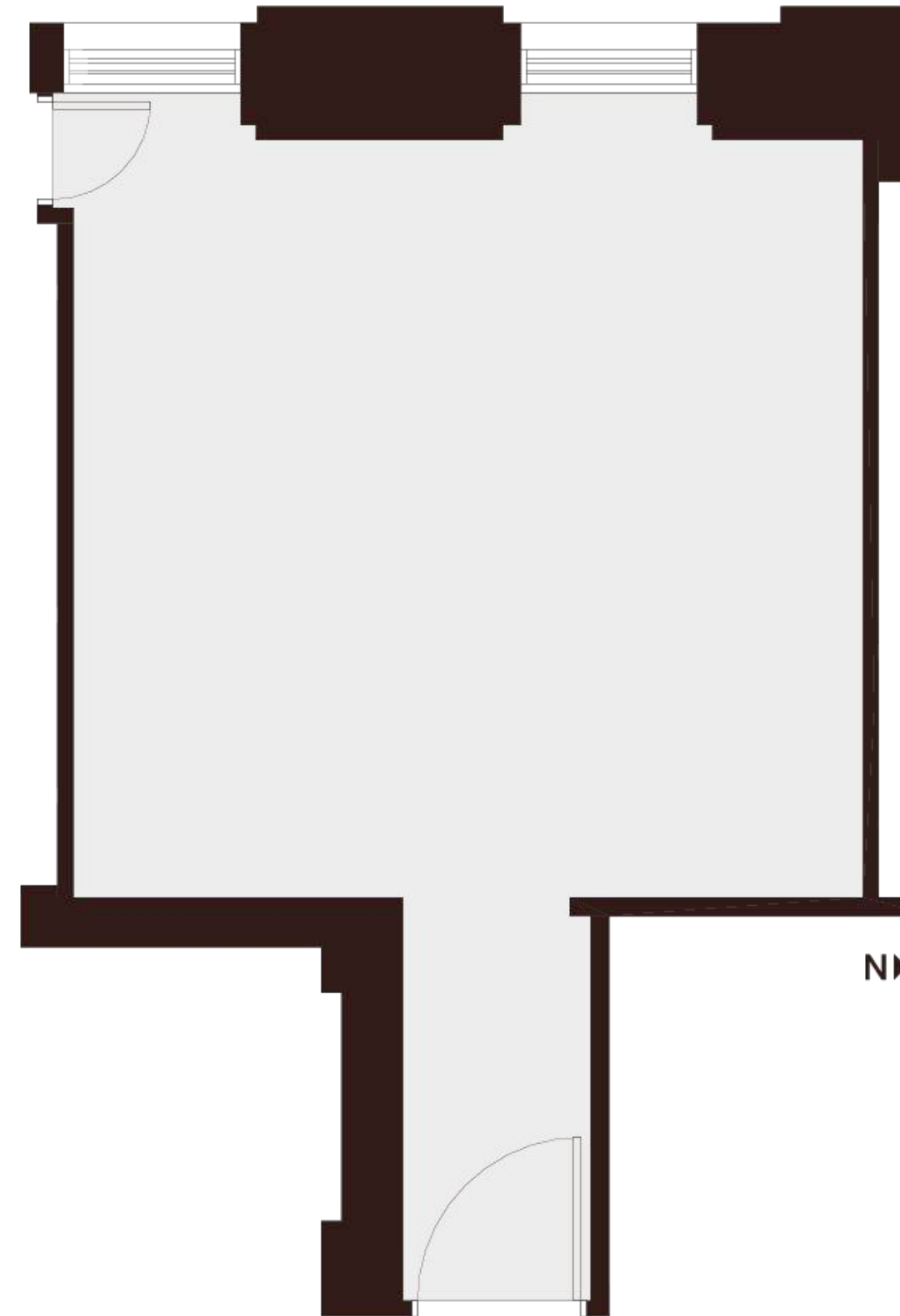
Elena Saccone

Senior Associate

elena.saccone@cushwake.com

+1 (630) 699-9687

Lic. #02151049



Montgomery Street



235 Montgomery St. San Francisco, CA 94104



Floor 11

Suite 1158

~799 SQFT

Mid-Rise — As Built

- 1 Private Window Line Office
- 1 Open Work Area
- 1 Window Line Conference Room
- Sink with Under Counter Refrigerator and Cabinetry

Mark Anderson

Vice Chairman

mark.anderson@cushwake.com

+1 (415) 713-1014

Lic. #01325399

Danny Pickard

Director

danny.pickard@cushwake.com

+1 (415) 773-3572

Lic. #01975977

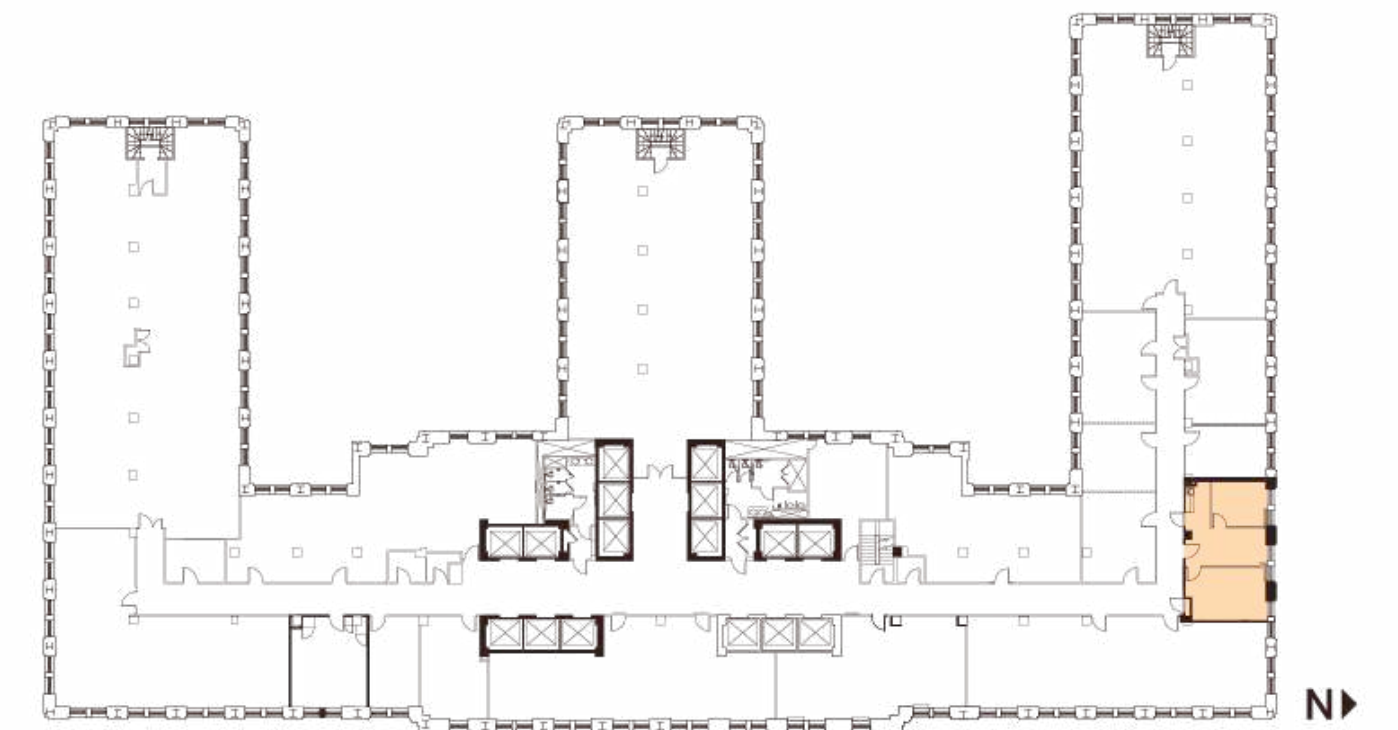
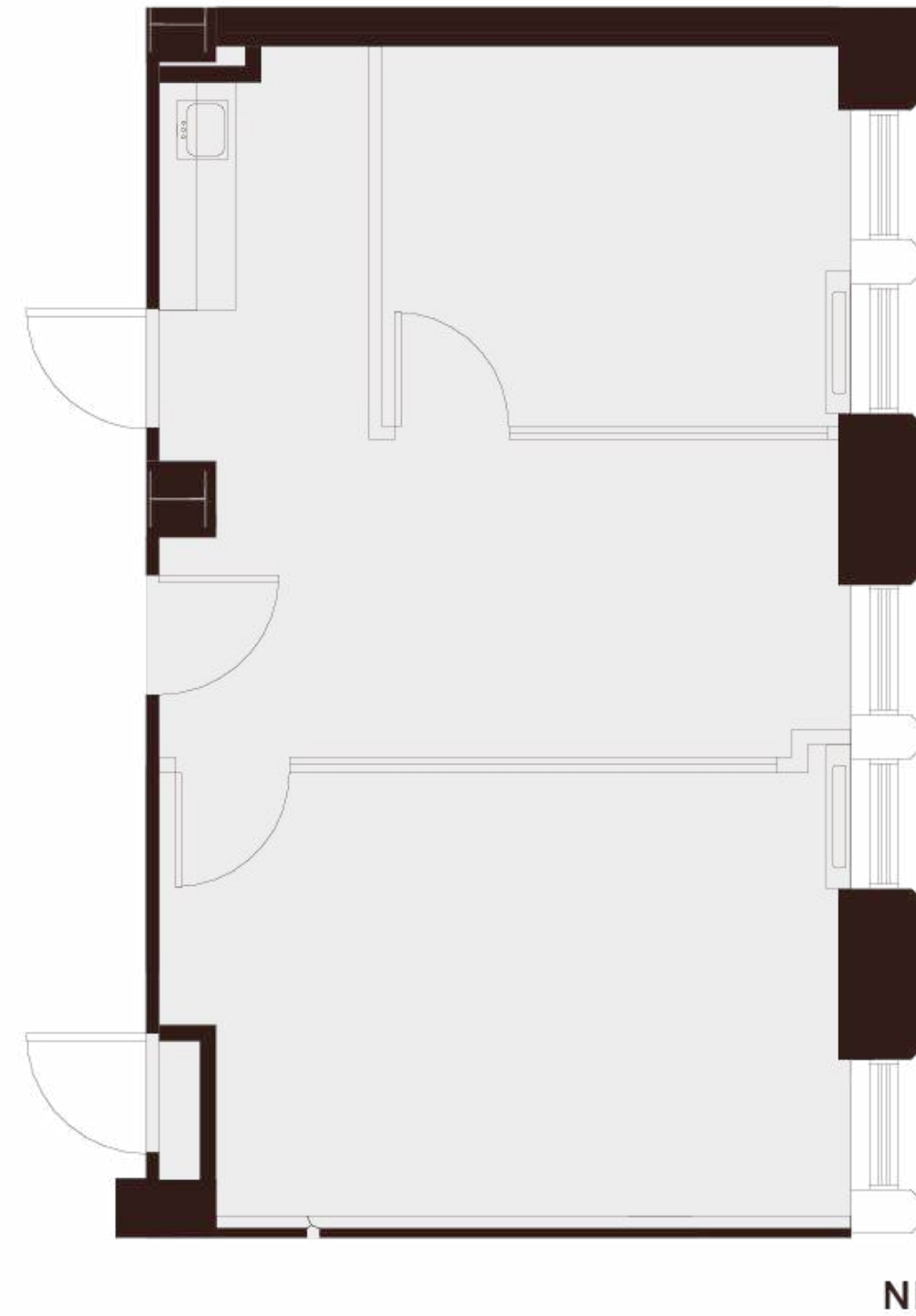
Elena Saccone

Senior Associate

elena.saccone@cushwake.com

+1 (630) 699-9687

Lic. #02151049



235 Montgomery St. San Francisco, CA 94104

