

Floor 7

Suite 725

~1,547 SQFT

Low-Rise — As Built

- 2 Window Line Offices
- 1 Open Work Area with Sink & Cabinetry
- 1 Open Work Area
- 1 Server / Storage Room
- 1 Window Line Conference Room

Mark Anderson

Vice Chairman

mark.anderson@cushwake.com

+1 (415) 713-1014

Lic. #01325399

Danny Pickard

Director

danny.pickard@cushwake.com

+1 (415) 773-3572

Lic. #01975977

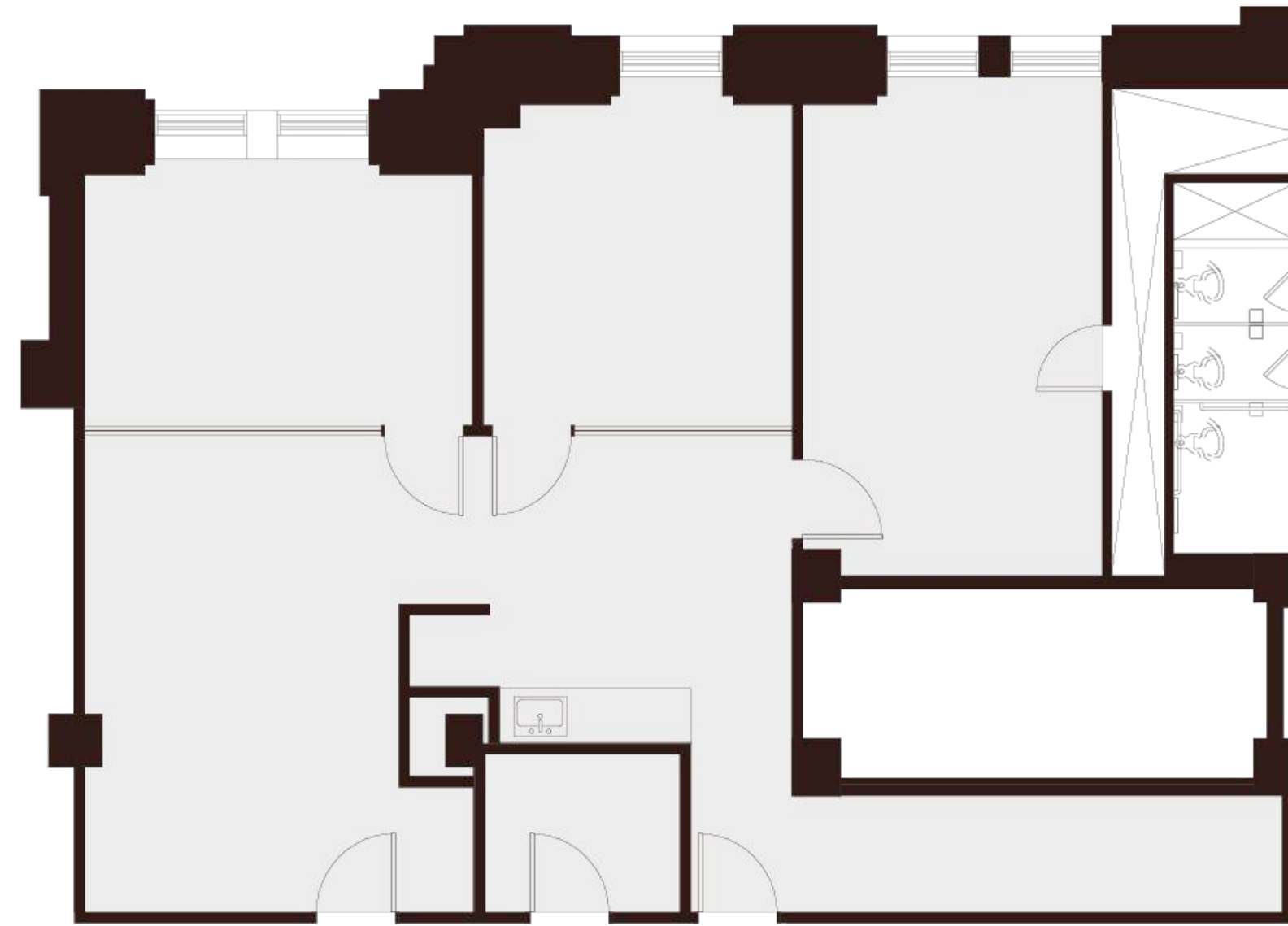
Elena Saccone

Senior Associate

elena.saccone@cushwake.com

+1 (630) 699-9687

Lic. #02151049



N▶



Montgomery Street



235 Montgomery St. San Francisco, CA 94104

