

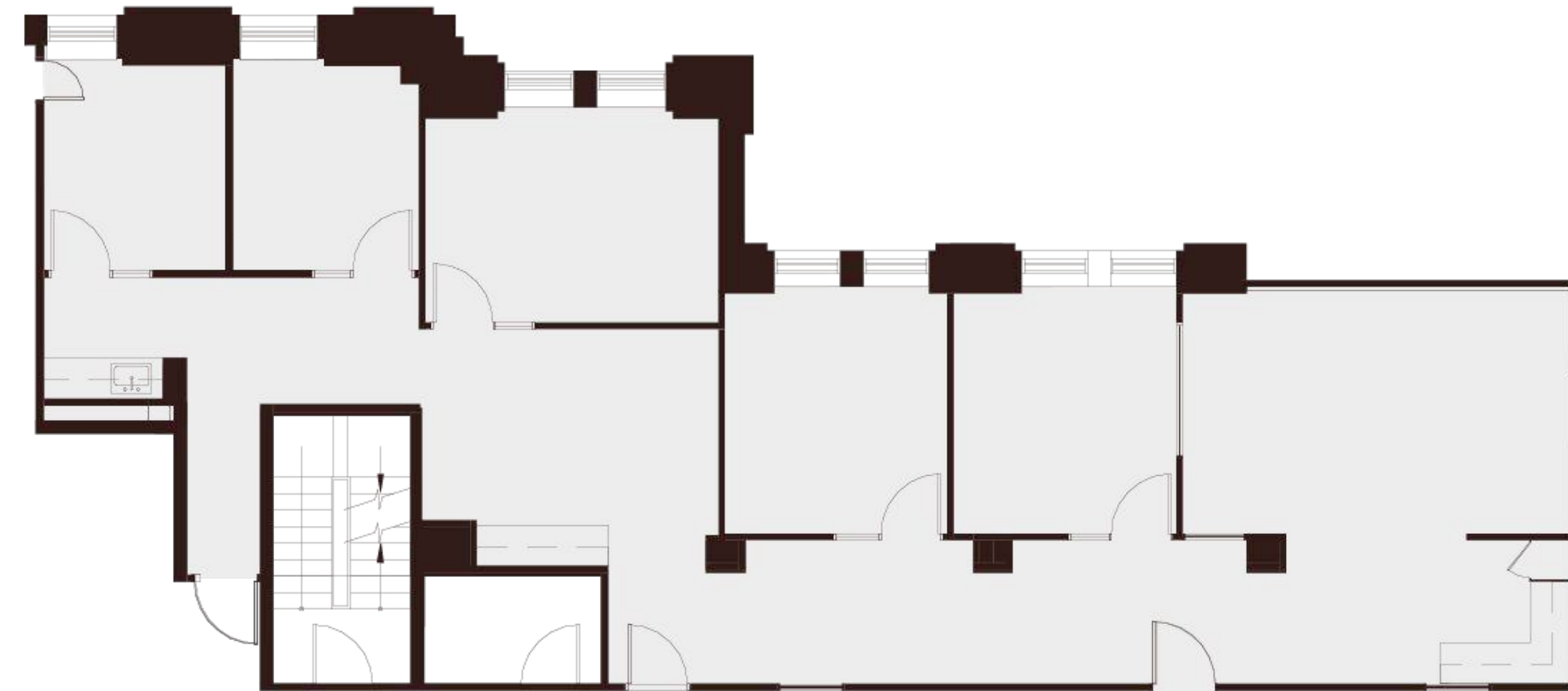
# Floor 6

## Suite 640

~2,139 SQFT

Low-Rise — As Built

- 4 Private Offices
- 1 Open Area with Sink & Cabinetry
- 1 Huddle Room



N▶

Mark Anderson

Vice Chairman

[mark.anderson@cushwake.com](mailto:mark.anderson@cushwake.com)

+1 (415) 713-1014

Lic. #01325399

Danny Pickard

Director

[danny.pickard@cushwake.com](mailto:danny.pickard@cushwake.com)

+1 (415) 773-3572

Lic. #01975977

Elena Saccone

Senior Associate

[elena.saccone@cushwake.com](mailto:elena.saccone@cushwake.com)

+1 (630) 699-9687

Lic. #02151049



235 Montgomery St. San Francisco, CA 94104



Montgomery Street