

Floor 24

Suite 2400

~6,630 SQFT

High-Rise — Hypothetical Private Office

- 11 Private Offices
- 6 Workstations
- 1 Conference Room
- 1 Collaboration Area
- 1 Break Area
- 1 Copy Area
- 1 Reception Area
- 1 Server Room
- 1 Storage Room

Mark Anderson

Vice Chairman

mark.anderson@cushwake.com

+1 (415) 713-1014

Lic. #01325399

Danny Pickard

Director

danny.pickard@cushwake.com

+1 (415) 773-3572

Lic. #01975977

Elena Saccone

Senior Associate

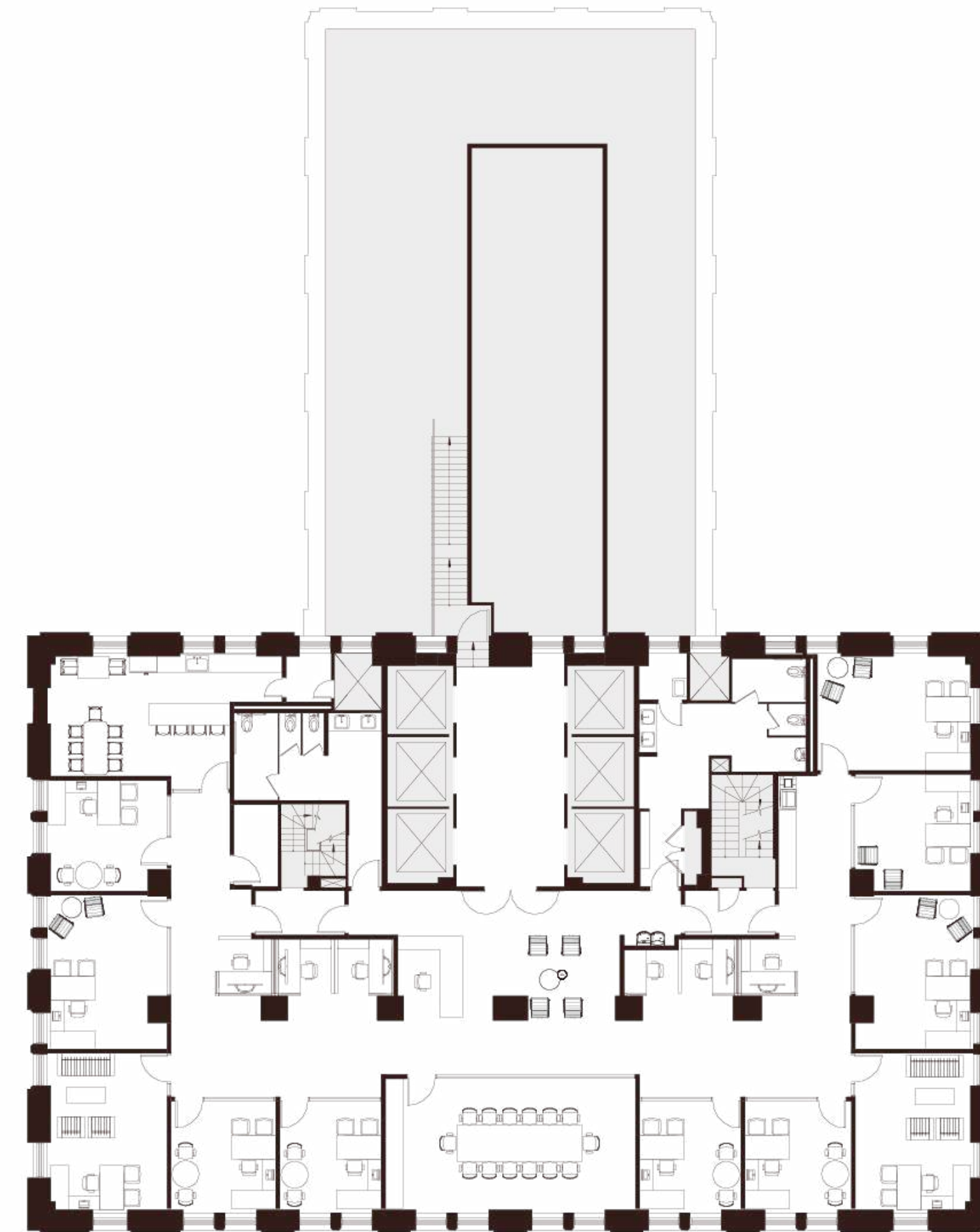
elena.saccone@cushwake.com

+1 (630) 699-9687

Lic. #02151049



235 Montgomery St. San Francisco, CA 94104



Montgomery Street



Floor 24

Suite 2400

~6,630 SQFT

High-Rise — Hypothetical Open Office

- 48 Workstations
- 1 Conference Room
- 3 Huddle Rooms
- 1 Collaboration Area
- 1 Phone Room
- 1 Break Area
- 1 Copy Area
- 1 Reception Area
- 1 Server Room
- 1 Storage Room

Mark Anderson

Vice Chairman

mark.anderson@cushwake.com

+1 (415) 713-1014

Lic. #01325399

Danny Pickard

Director

danny.pickard@cushwake.com

+1 (415) 773-3572

Lic. #01975977

Elena Saccone

Senior Associate

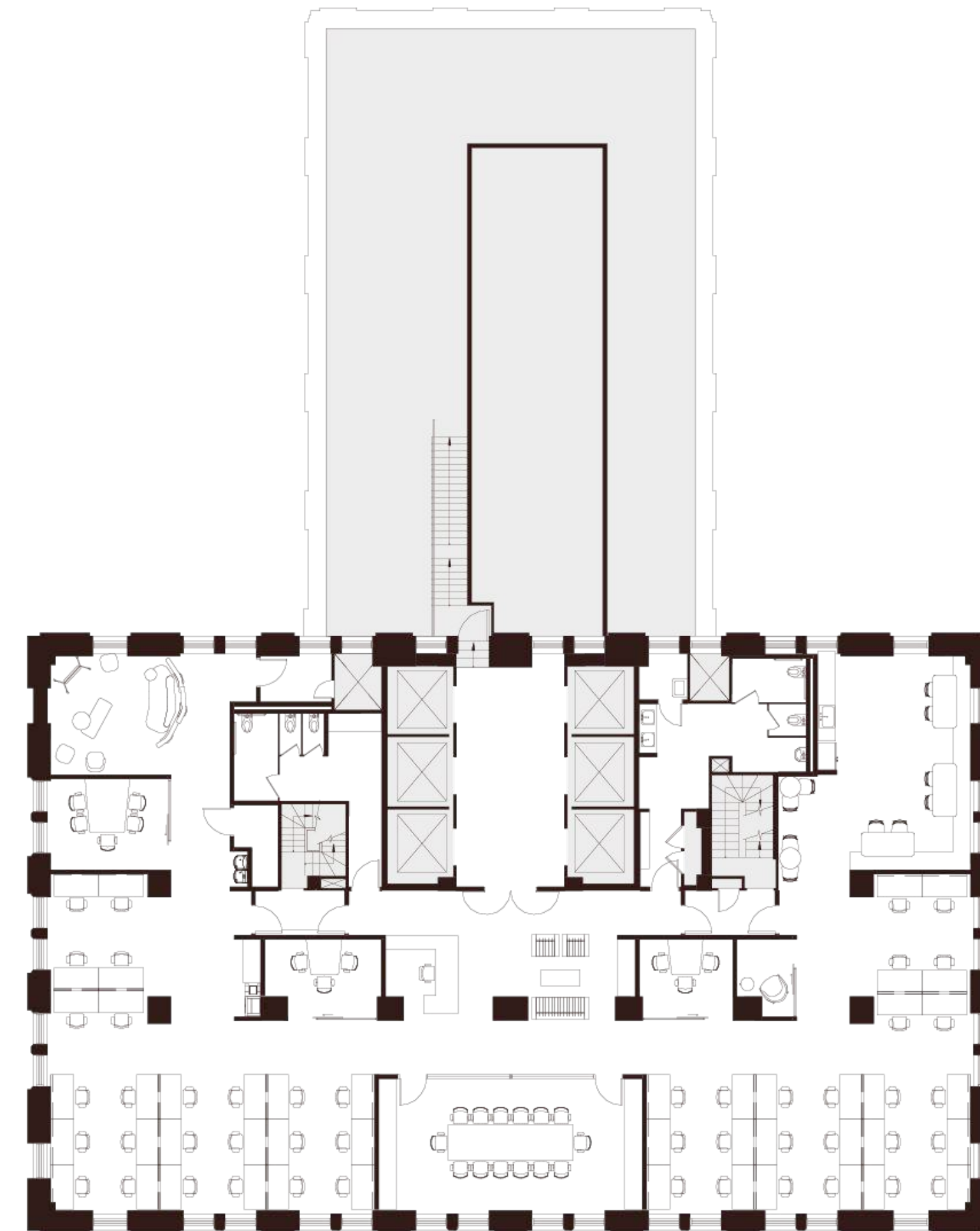
elena.saccone@cushwake.com

+1 (630) 699-9687

Lic. #02151049



235 Montgomery St. San Francisco, CA 94104



Montgomery Street



Floor 24

Suite 2400

~6,630 SQFT

High-Rise — Base Plan

Mark Anderson

Vice Chairman

mark.anderson@cushwake.com

+1 (415) 713-1014

Lic. #01325399

Danny Pickard

Director

danny.pickard@cushwake.com

+1 (415) 773-3572

Lic. #01975977

Elena Saccone

Senior Associate

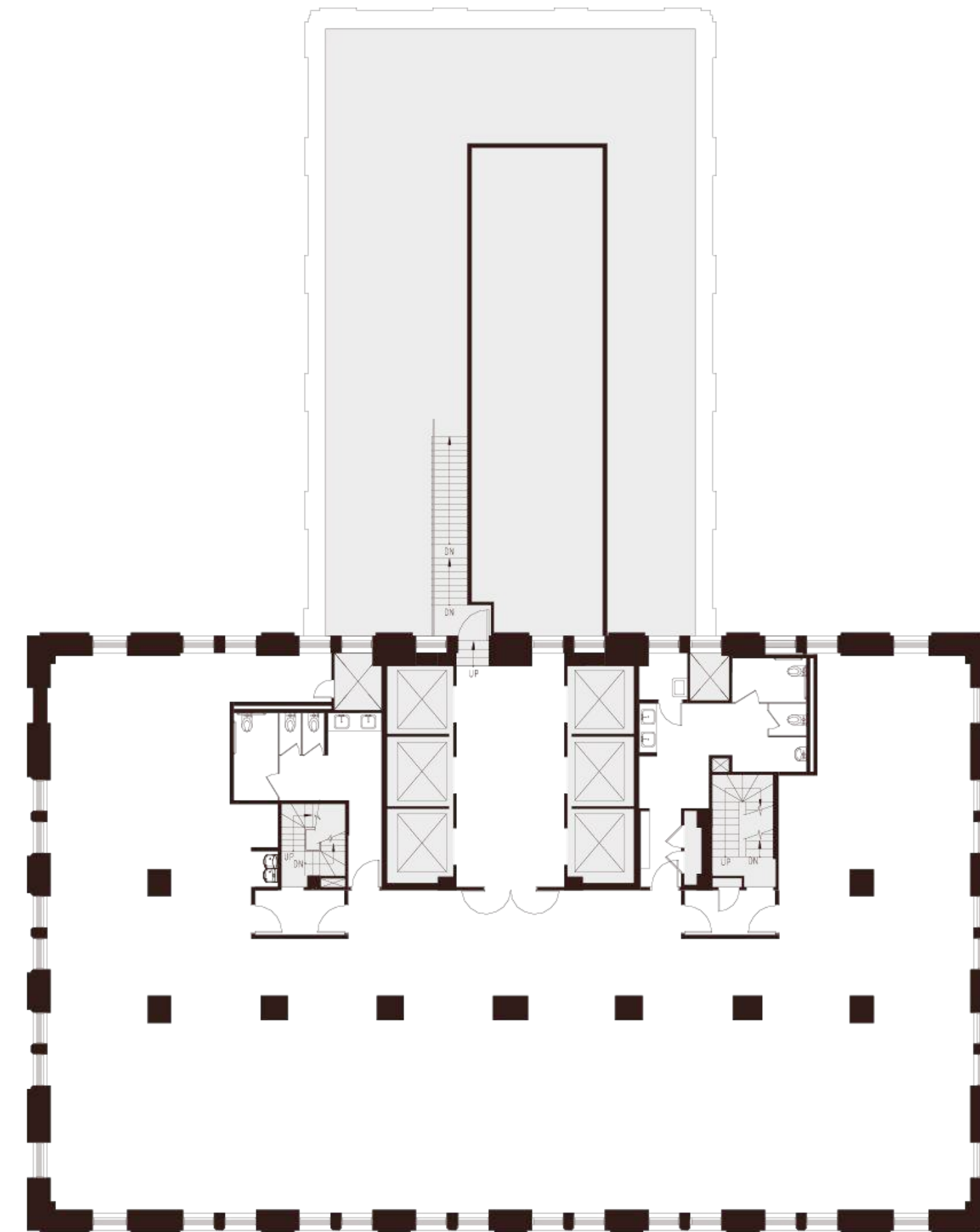
elena.saccone@cushwake.com

+1 (630) 699-9687

Lic. #02151049



235 Montgomery St. San Francisco, CA 94104



Montgomery Street

