

# Floor 18

## Suite 1830

~4,029 SQFT

High-Rise — As Built

- 1 Reception Area
- 2 Corner Offices
- 6 Window Line Offices
- 1 Conference Room
- 1 Break Room with Sink, Cabinetry & Refrigerator
- 1 Open Admin Area

Mark Anderson

Vice Chairman

[mark.anderson@cushwake.com](mailto:mark.anderson@cushwake.com)

+1 (415) 713-1014

Lic. #01325399

Danny Pickard

Director

[danny.pickard@cushwake.com](mailto:danny.pickard@cushwake.com)

+1 (415) 773-3572

Lic. #01975977

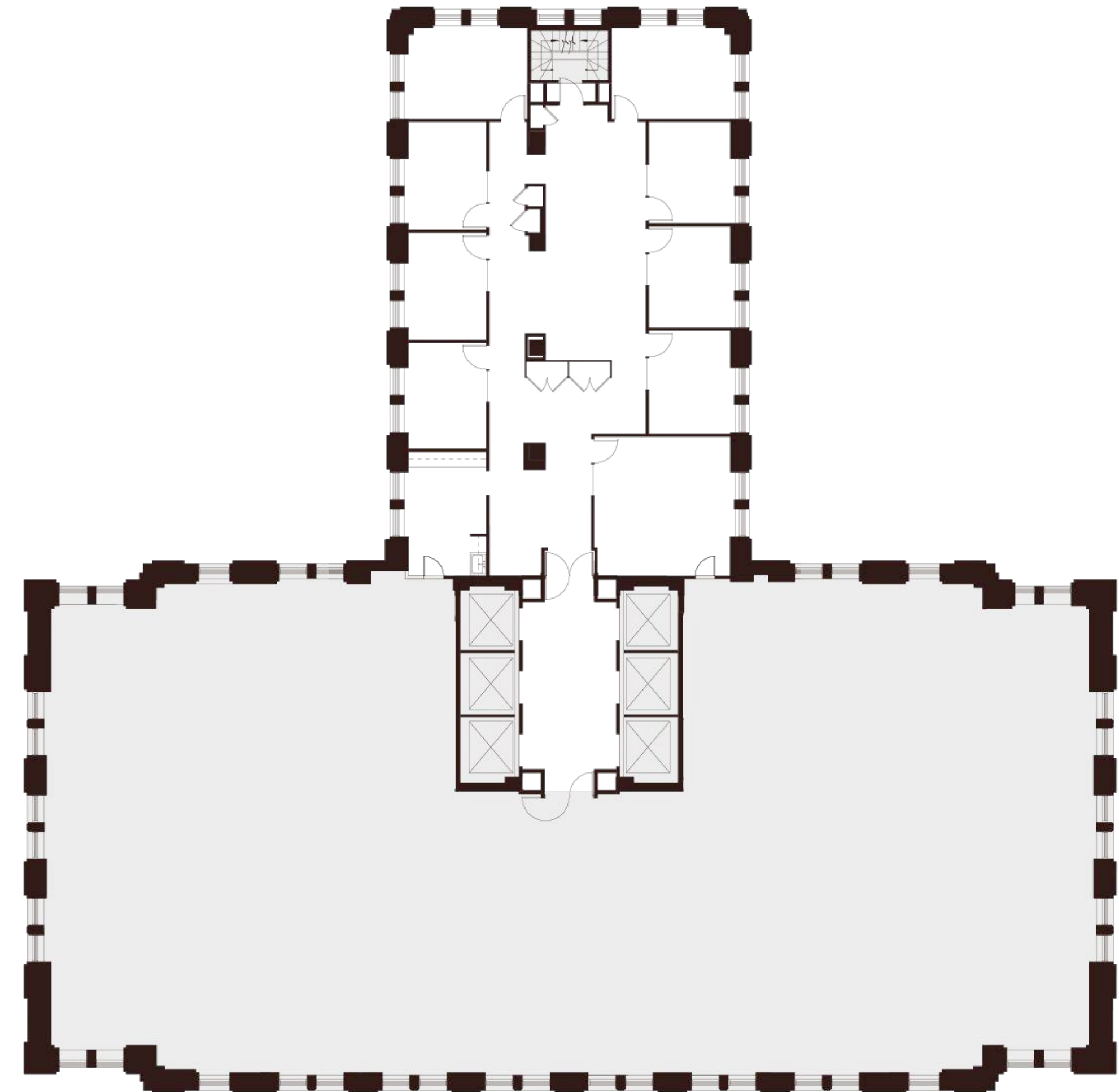
Elena Saccone

Senior Associate

[elena.saccone@cushwake.com](mailto:elena.saccone@cushwake.com)

+1 (630) 699-9687

Lic. #02151049



Montgomery Street

N▶



235 Montgomery St. San Francisco, CA 94104

