

Floor 4

Suite 430

~3,545 SQFT

Low-Rise — As Built

- 1 Open Work Area
- 1 Conference Room
- 1 Copy Area
- 1 Huddle Room
- 1 Break Area

Mark Anderson

Vice Chairman

mark.anderson@cushwake.com

+1 (415) 713-1014

Lic. #01325399

Danny Pickard

Director

danny.pickard@cushwake.com

+1 (415) 773-3572

Lic. #01975977

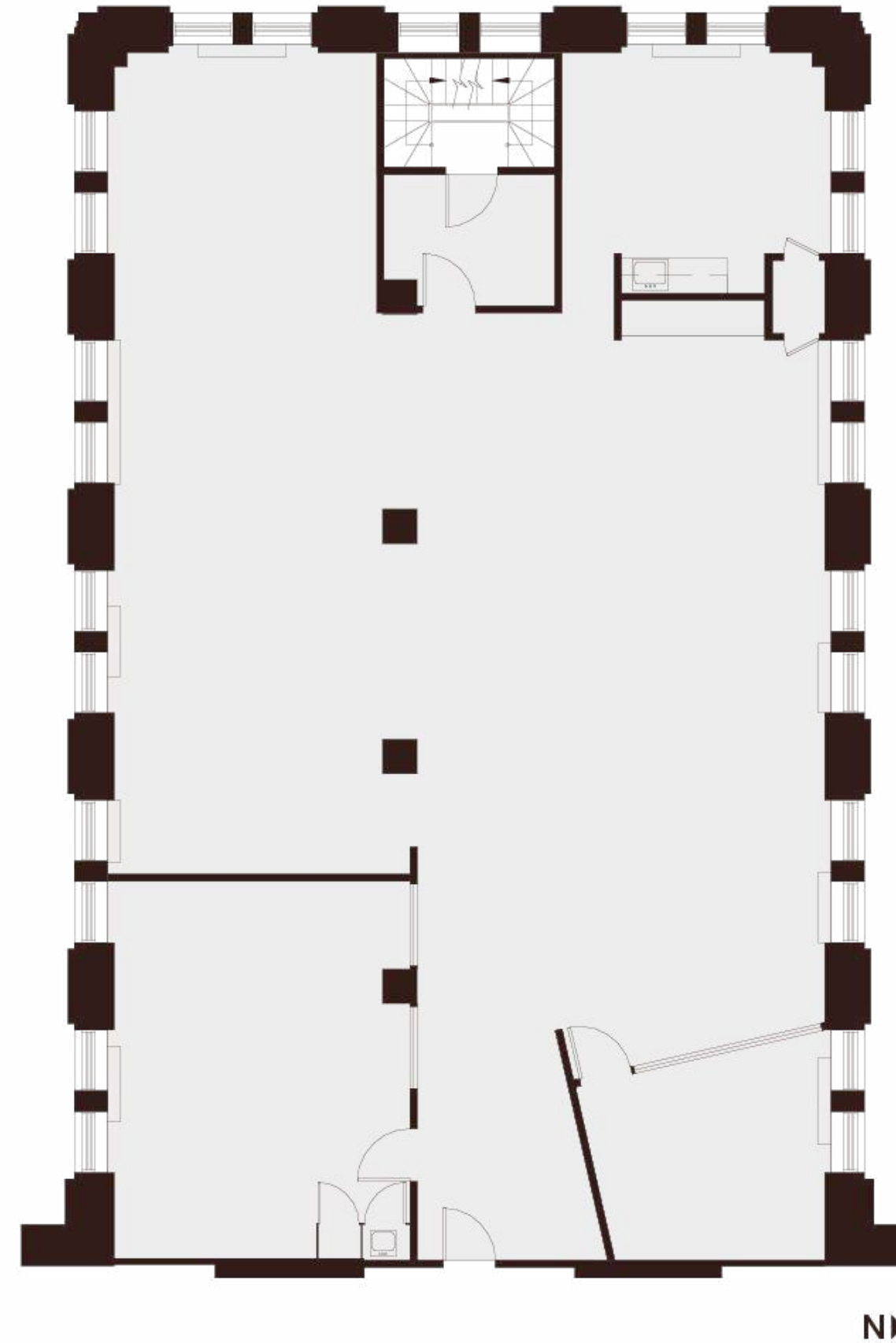
Elena Saccone

Senior Associate

elena.saccone@cushwake.com

+1 (630) 699-9687

Lic. #02151049



Montgomery Street



235 Montgomery St. San Francisco, CA 94104

