

# Floor 30

## Suite 3000

~5,658 SQFT

High-Rise — Base Plan

Mark Anderson

Vice Chairman

[mark.anderson@cushwake.com](mailto:mark.anderson@cushwake.com)

+1 (415) 713-1014

Lic. #01325399

Danny Pickard

Director

[danny.pickard@cushwake.com](mailto:danny.pickard@cushwake.com)

+1 (415) 773-3572

Lic. #01975977

Elena Saccone

Senior Associate

[elena.saccone@cushwake.com](mailto:elena.saccone@cushwake.com)

+1 (630) 699-9687

Lic. #02151049



235 Montgomery St. San Francisco, CA 94104



# Floor 30

## Suite 3000

~5,658 SQFT

### High-Rise — Hypothetical Open Office

- 38 Workstations
- 1 Conference Room
- 3 Huddle Rooms
- 1 Phone Room
- 1 Break Area
- 1 Copy Area
- 1 Reception Area
- 1 Server Room
- 2 Storage Rooms

Mark Anderson

Vice Chairman

[mark.anderson@cushwake.com](mailto:mark.anderson@cushwake.com)

+1 (415) 713-1014

Lic. #01325399

Danny Pickard

Director

[danny.pickard@cushwake.com](mailto:danny.pickard@cushwake.com)

+1 (415) 773-3572

Lic. #01975977

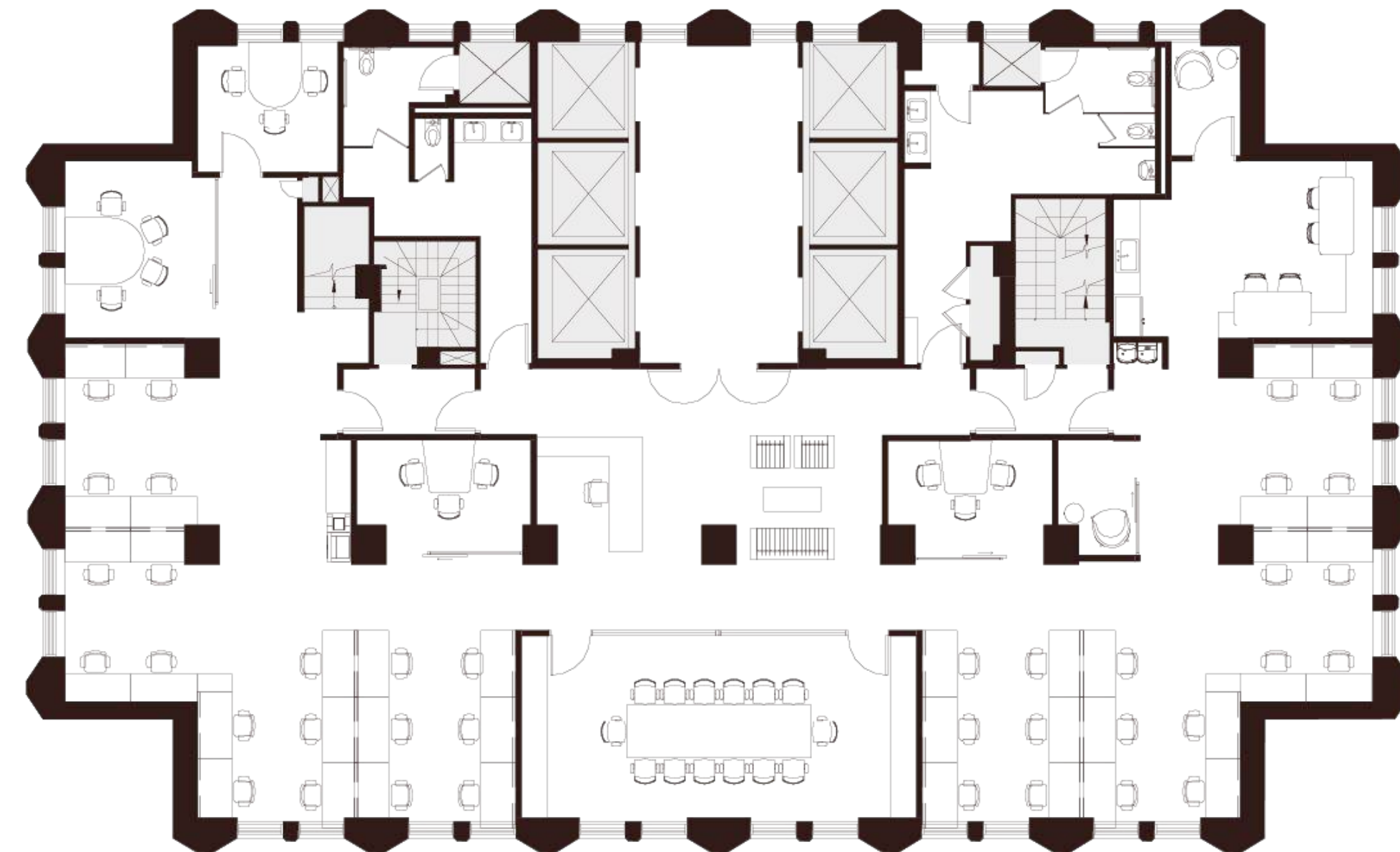
Elena Saccone

Senior Associate

[elena.saccone@cushwake.com](mailto:elena.saccone@cushwake.com)

+1 (630) 699-9687

Lic. #02151049



Montgomery Street



235 Montgomery St. San Francisco, CA 94104



# Floor 30

## Suite 3000

~5,658 SQFT

### High-Rise — Hypothetical Private Office

- 9 Private Offices
- 6 Workstations
- 1 Conference Room
- 1 Break Area
- 1 Copy Area
- 1 Reception Area
- 1 Server Room
- 1 Storage Room

Mark Anderson

Vice Chairman

[mark.anderson@cushwake.com](mailto:mark.anderson@cushwake.com)

+1 (415) 713-1014

Lic. #01325399

Danny Pickard

Director

[danny.pickard@cushwake.com](mailto:danny.pickard@cushwake.com)

+1 (415) 773-3572

Lic. #01975977

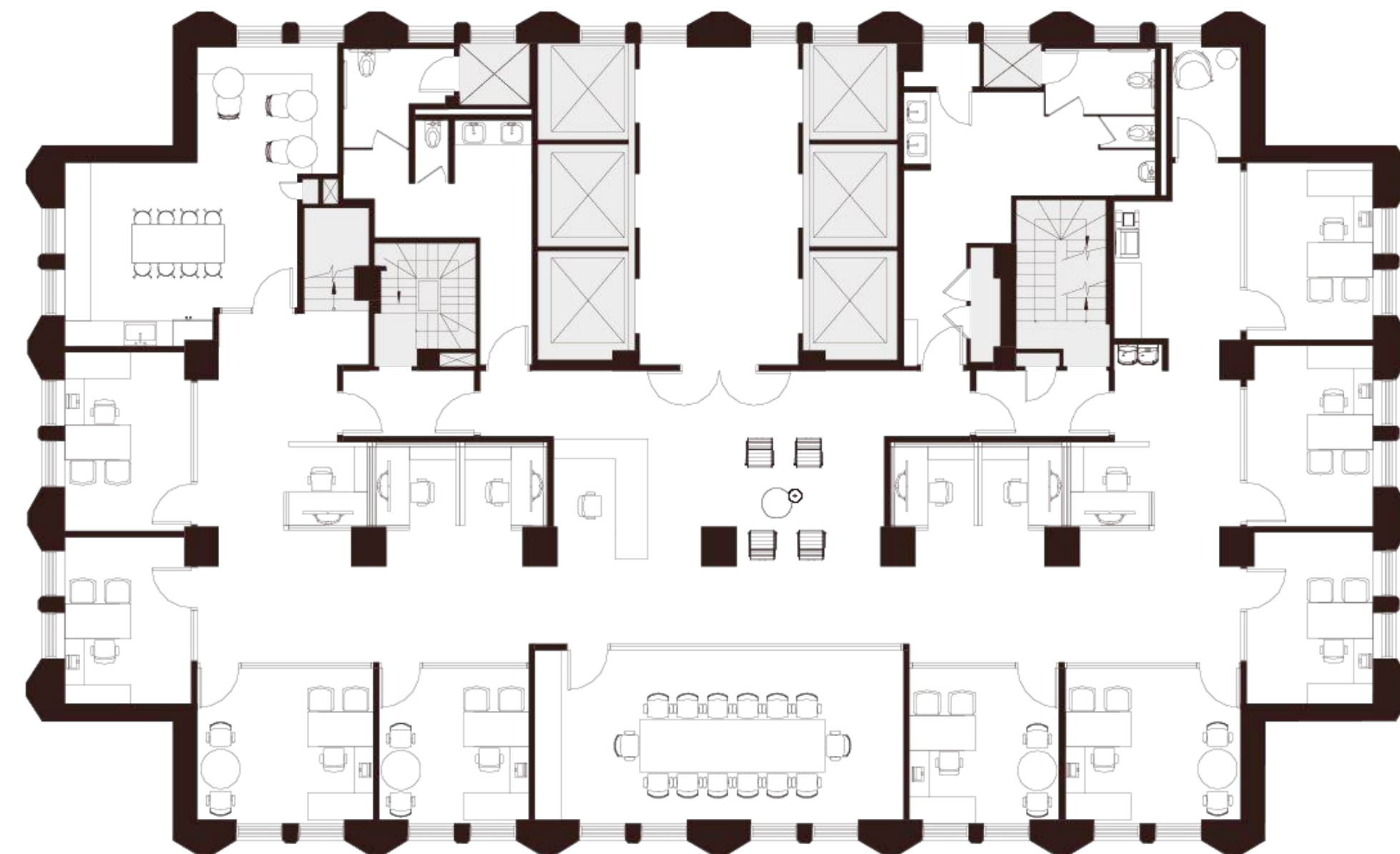
Elena Saccone

Senior Associate

[elena.saccone@cushwake.com](mailto:elena.saccone@cushwake.com)

+1 (630) 699-9687

Lic. #02151049



Montgomery Street



235 Montgomery St. San Francisco, CA 94104



# Floor 31

## Suite 3100

~5,126 SQFT

High-Rise — Base Plan

Mark Anderson

Vice Chairman

[mark.anderson@cushwake.com](mailto:mark.anderson@cushwake.com)

+1 (415) 713-1014

Lic. #01325399

Danny Pickard

Director

[danny.pickard@cushwake.com](mailto:danny.pickard@cushwake.com)

+1 (415) 773-3572

Lic. #01975977

Elena Saccone

Senior Associate

[elena.saccone@cushwake.com](mailto:elena.saccone@cushwake.com)

+1 (630) 699-9687

Lic. #02151049



235 Montgomery St. San Francisco, CA 94104



# Floor 31

## Suite 3100

~5,126 SQFT

### High-Rise — Hypothetical Open Office

- 38 Workstations
- 1 Conference Room
- 2 Huddle Rooms
- 1 Collaboration Area
- 3 Phone Rooms
- 1 Copy Area
- 1 Server Room
- 1 Storage Room

Mark Anderson

Vice Chairman

[mark.anderson@cushwake.com](mailto:mark.anderson@cushwake.com)

+1 (415) 713-1014

Lic. #01325399

Danny Pickard

Director

[danny.pickard@cushwake.com](mailto:danny.pickard@cushwake.com)

+1 (415) 773-3572

Lic. #01975977

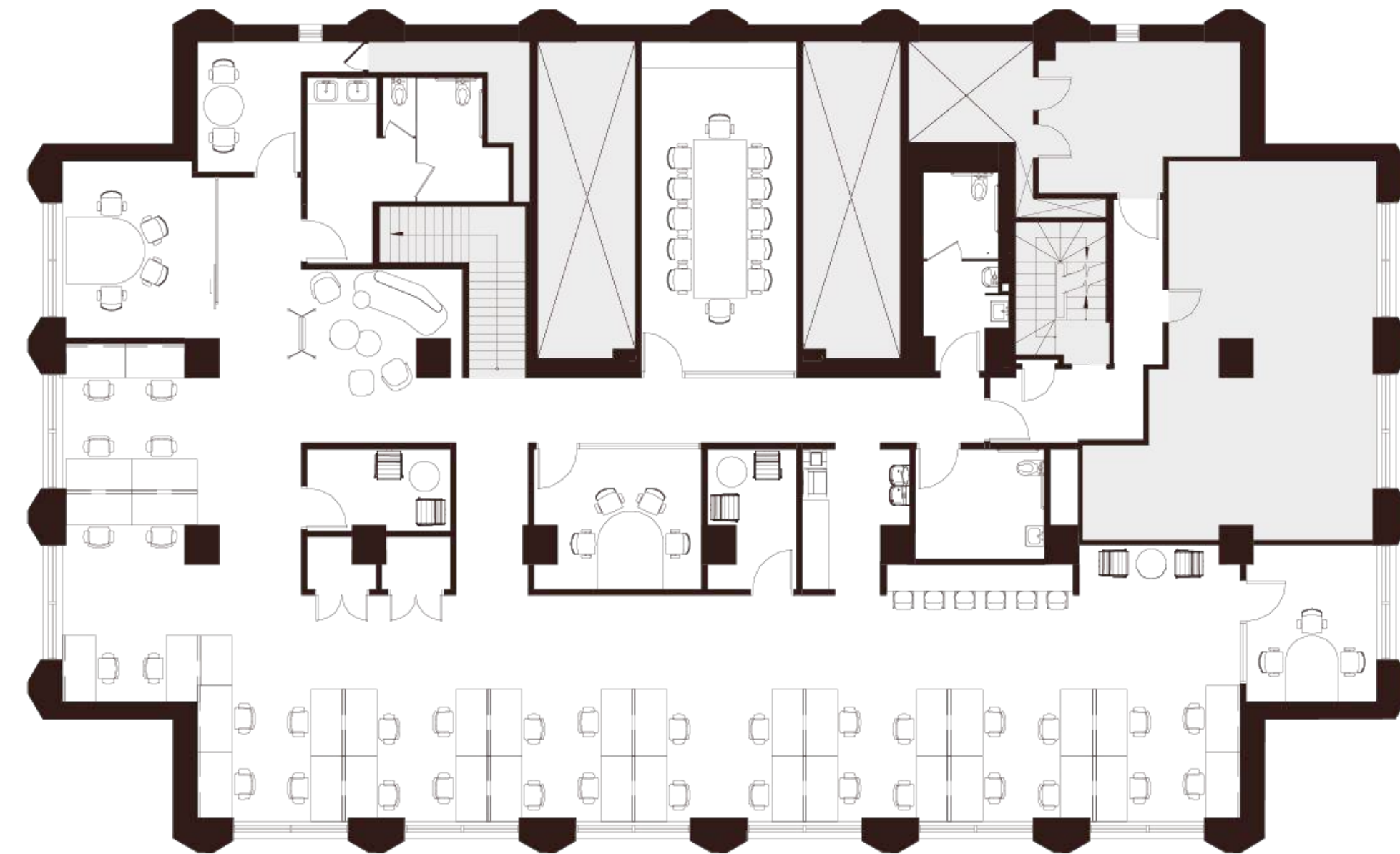
Elena Saccone

Senior Associate

[elena.saccone@cushwake.com](mailto:elena.saccone@cushwake.com)

+1 (630) 699-9687

Lic. #02151049



Montgomery Street



235 Montgomery St. San Francisco, CA 94104



# Floor 31

## Suite 3100

~5,126 SQFT

### High-Rise — Hypothetical Private Office

- 10 Private Offices
- 4 Workstations
- 1 Conference Room
- 1 Huddle Room
- 2 Phone Rooms
- 1 Copy Area
- 1 Server Room
- 1 Storage Room

Mark Anderson

Vice Chairman

[mark.anderson@cushwake.com](mailto:mark.anderson@cushwake.com)

+1 (415) 713-1014

Lic. #01325399

Danny Pickard

Director

[danny.pickard@cushwake.com](mailto:danny.pickard@cushwake.com)

+1 (415) 773-3572

Lic. #01975977

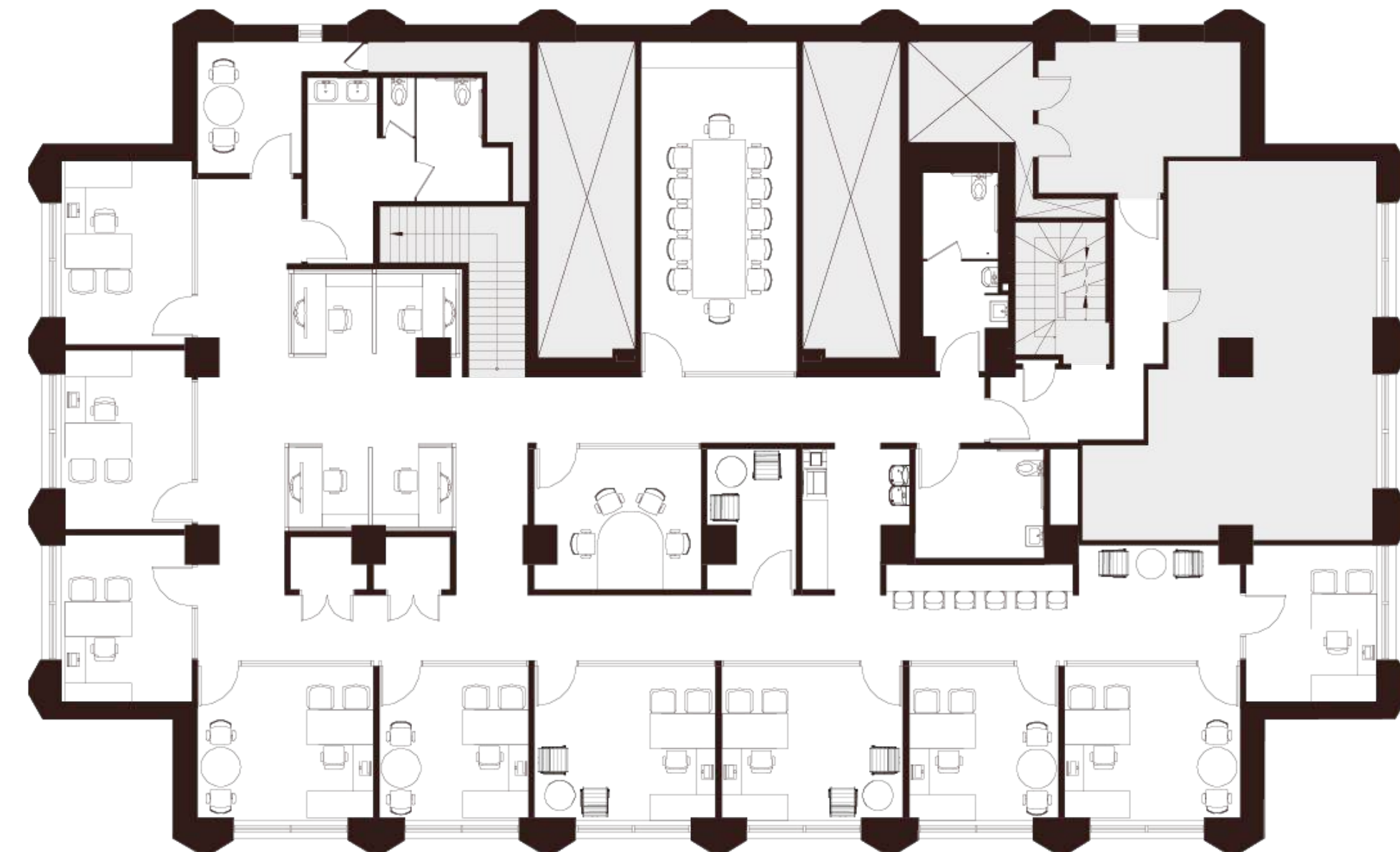
Elena Saccone

Senior Associate

[elena.saccone@cushwake.com](mailto:elena.saccone@cushwake.com)

+1 (630) 699-9687

Lic. #02151049



Montgomery Street



235 Montgomery St. San Francisco, CA 94104

