

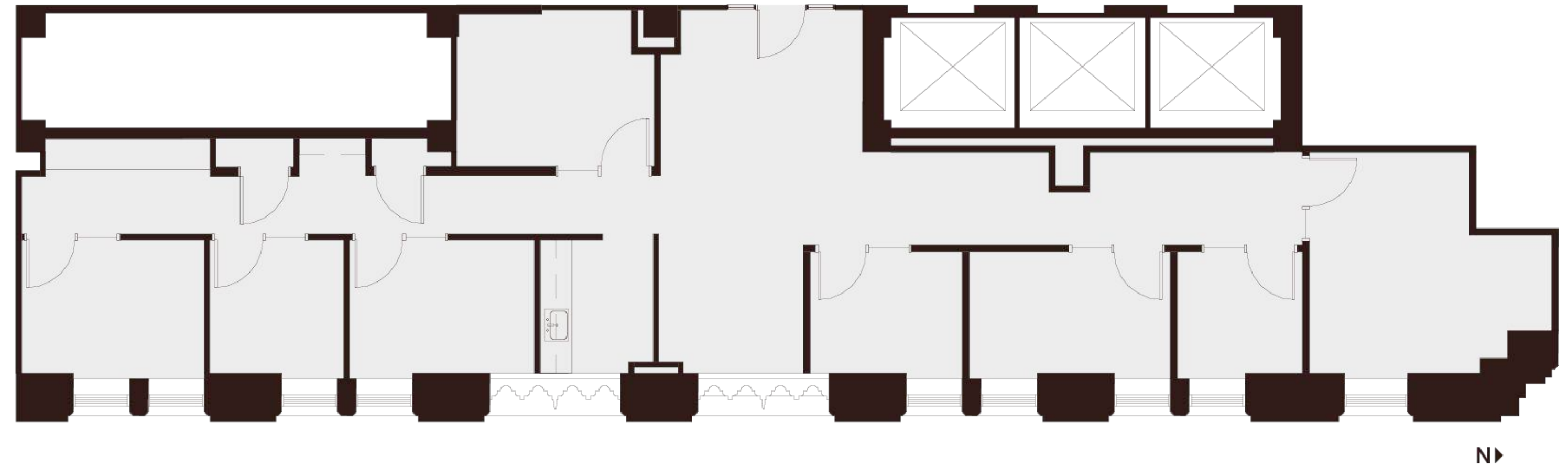
# Floor 3

## Suite 300

~2,063 SQFT

Low-Rise — As Built

- 1 Open Work Area
- 6 Private Offices
- 2 Meeting Rooms
- 1 Copy Area
- 1 Break Area



Mark Anderson

Vice Chairman

[mark.anderson@cushwake.com](mailto:mark.anderson@cushwake.com)

+1 (415) 713-1014

Lic. #01325399

Danny Pickard

Director

[danny.pickard@cushwake.com](mailto:danny.pickard@cushwake.com)

+1 (415) 773-3572

Lic. #01975977

Elena Saccone

Senior Associate

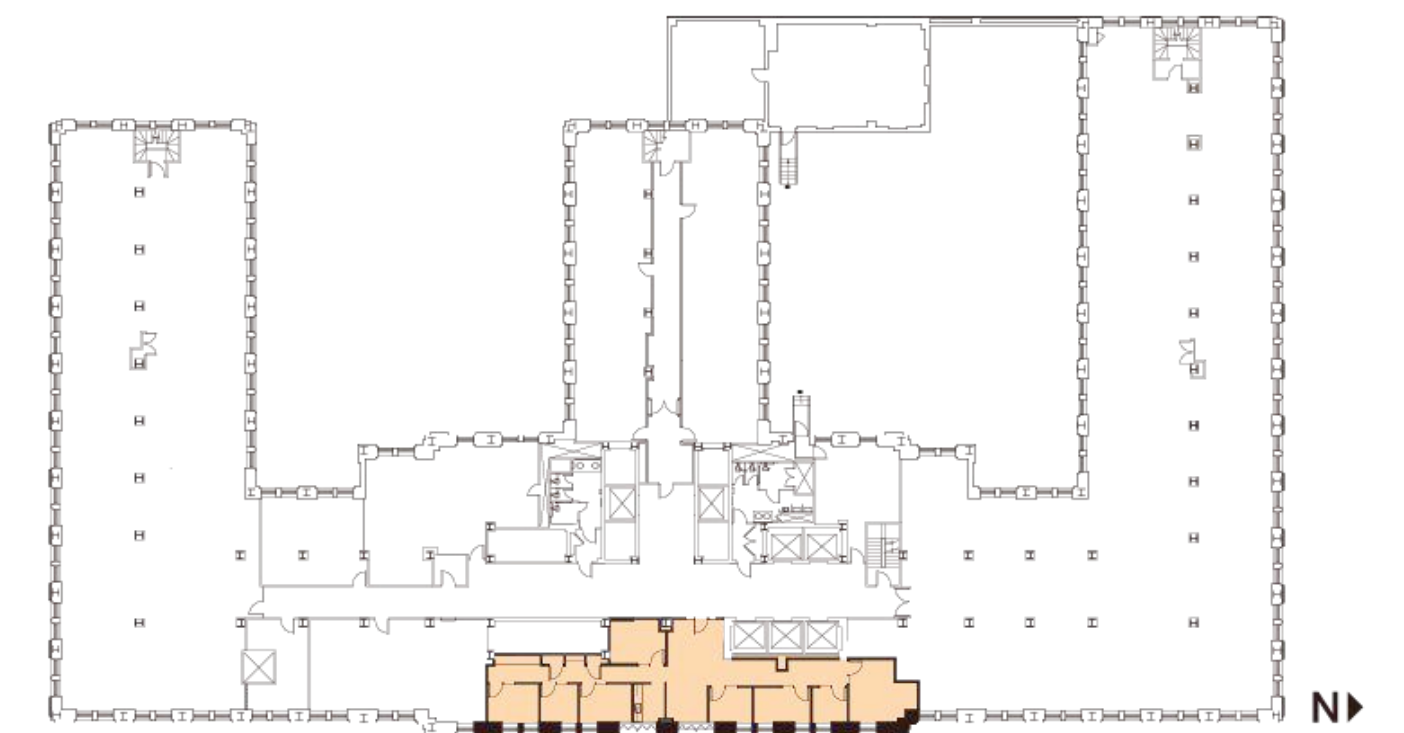
[elena.saccone@cushwake.com](mailto:elena.saccone@cushwake.com)

+1 (630) 699-9687

Lic. #02151049



235 Montgomery St. San Francisco, CA 94104



Montgomery Street