

Floor 21

Suite 2100

~7,970 SQFT

High-Rise — Base Plan

Jim Collins

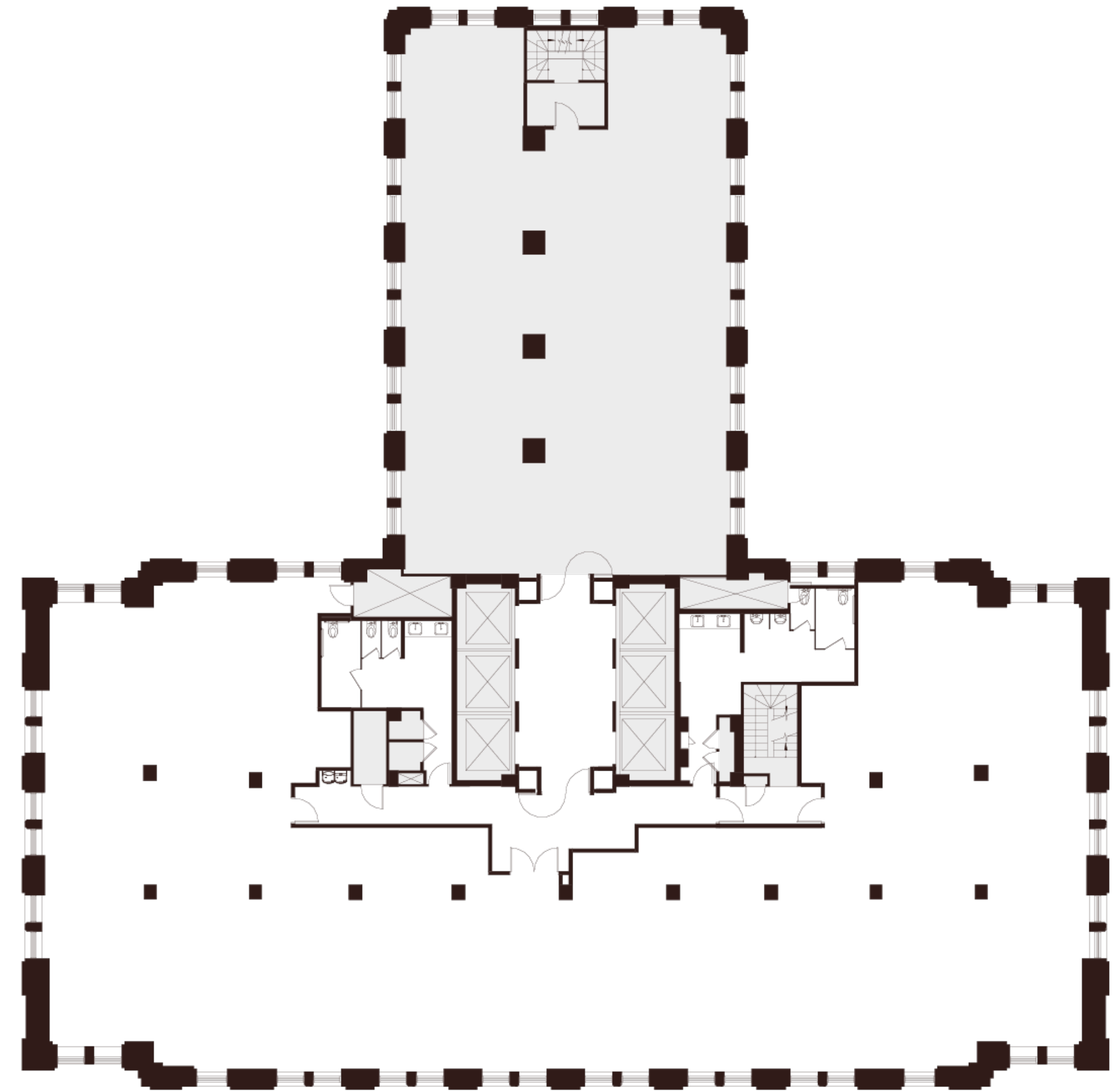
jcollins@shorenstein.com

(415) 352-7239

Lic. #00860991



235 Montgomery St. San Francisco, CA 94104



Montgomery Street



Floor 21

Suite 2100

~7,970 SQFT

High-Rise — Hypothetical Open Office

- 56 Workstations
- 1 Conference Room
- 3 Huddle Rooms
- 2 Collaboration Rooms
- 2 Phone Rooms
- 1 Break Room
- 1 Copy Area
- 1 Reception Area
- 1 Server Room
- 3 Storage Rooms

Jim Collins

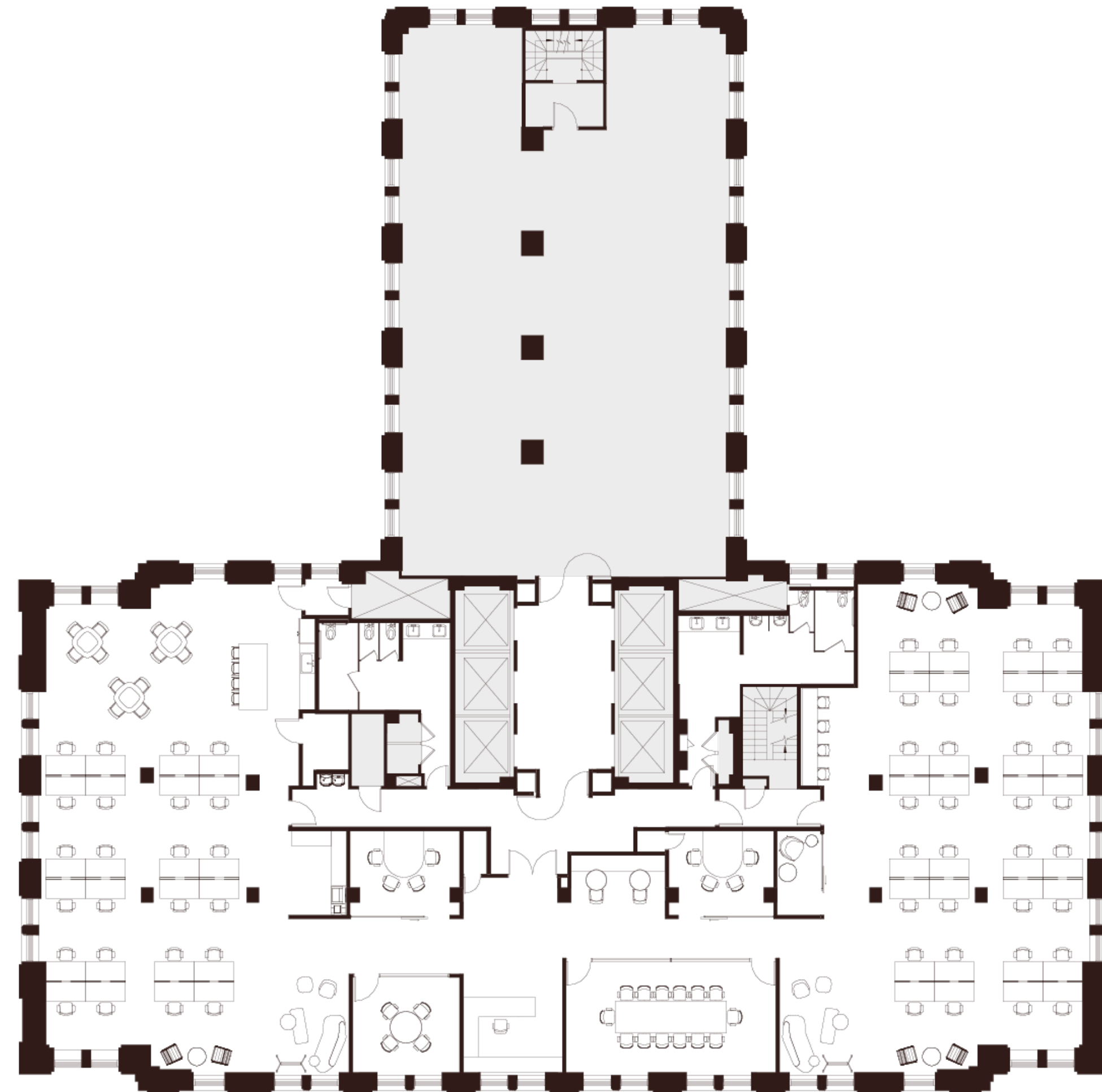
jcollins@shorenstein.com

(415) 352-7239

Lic. #00860991



235 Montgomery St. San Francisco, CA 94104



Montgomery Street



Floor 21

Suite 2100

~7,970 SQFT

High-Rise — Hypothetical Private Office

- 12 Private Offices
- 10 Workstations
- 1 Conference Room
- 1 Huddle Room
- 1 Phone Room
- 1 Break Room
- 1 Copy Area
- 1 Reception Area
- 1 Server Room
- 1 Storage Room

Jim Collins

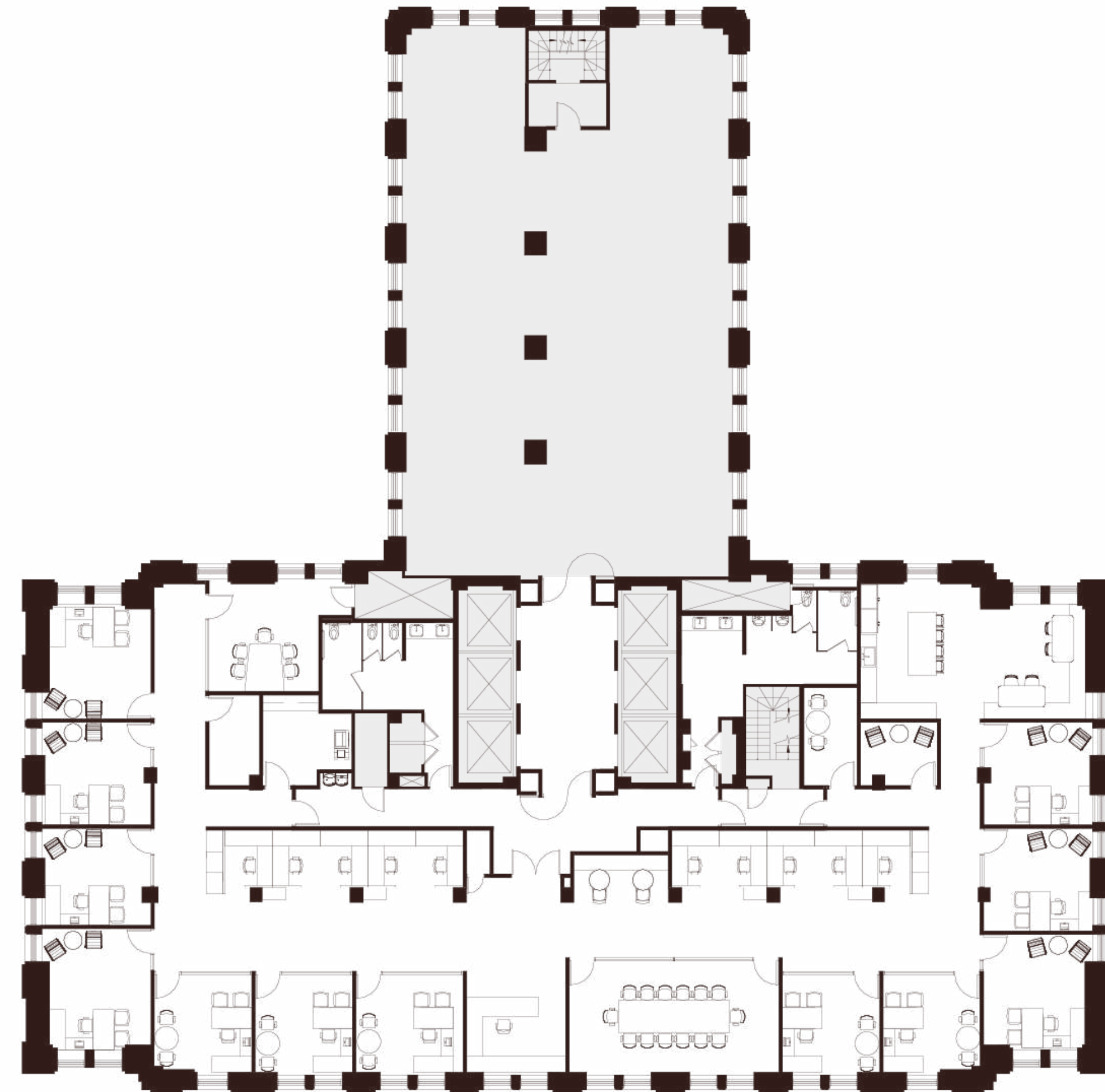
jcollins@shorenstein.com

(415) 352-7239

Lic. #00860991



235 Montgomery St. San Francisco, CA 94104



Montgomery Street

