

# Floor 25

## Suite 2500

~6,629 SQFT

High-Rise — Base Plan

Jim Collins

[jcollins@shorenstein.com](mailto:jcollins@shorenstein.com)

(415) 352-7239

Lic. #00860991



Montgomery Street



235 Montgomery St. San Francisco, CA 94104



# Floor 25

## Suite 2500

~6,629 SQFT

### High-Rise — Hypothetical Open Office

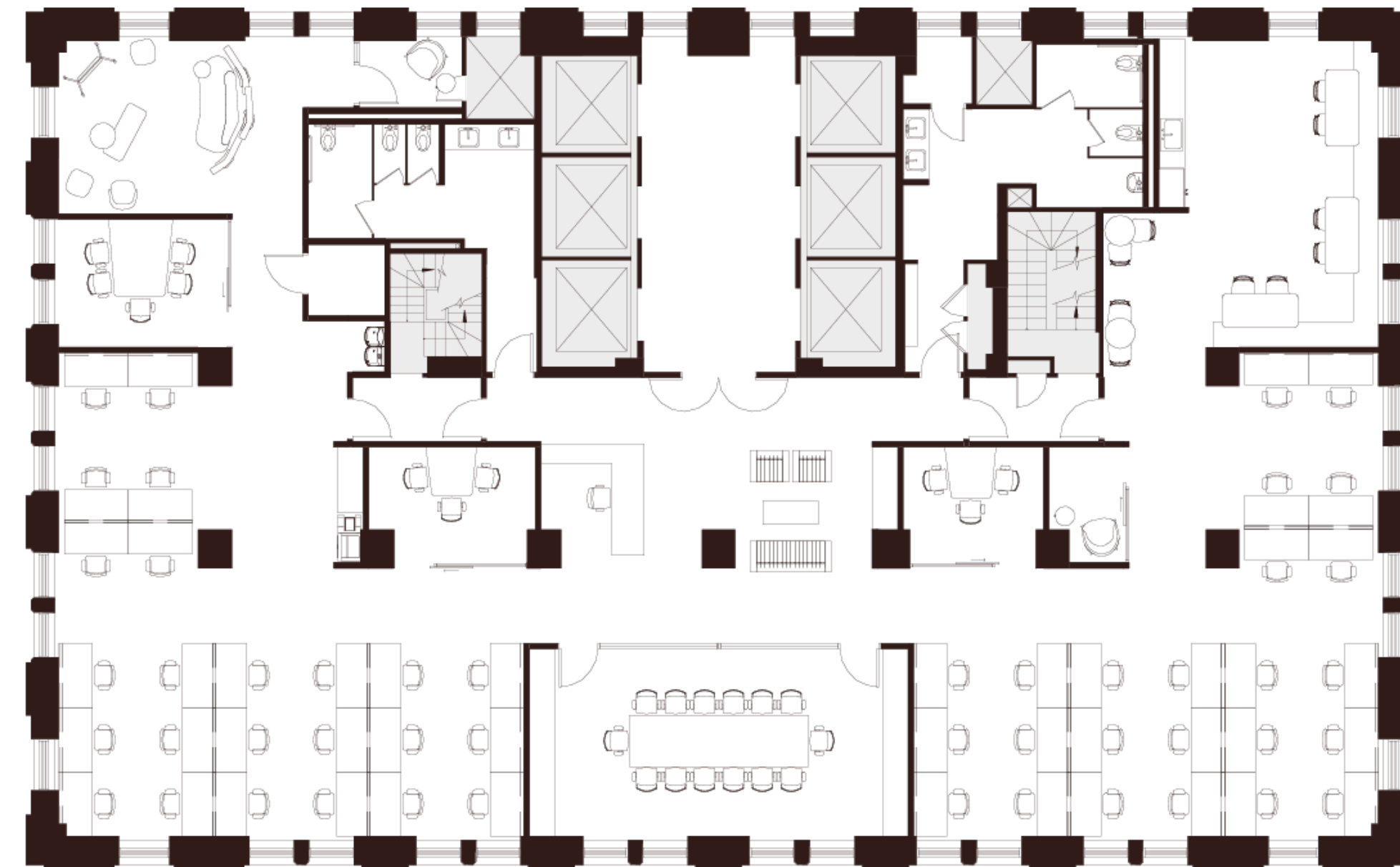
- 48 Workstations
- 1 Conference Room
- 3 Huddle Rooms
- 1 Collaboration Area
- 1 Phone Room
- 1 Break Area
- 1 Copy Area
- 1 Reception Area
- 1 Server Room
- 1 Storage Room

Jim Collins

[jcollins@shorenstein.com](mailto:jcollins@shorenstein.com)

(415) 352-7239

Lic. #00860991



Montgomery Street



235 Montgomery St. San Francisco, CA 94104



# Floor 25

## Suite 2500

~6,629 SQFT

### High-Rise — Hypothetical Private Office

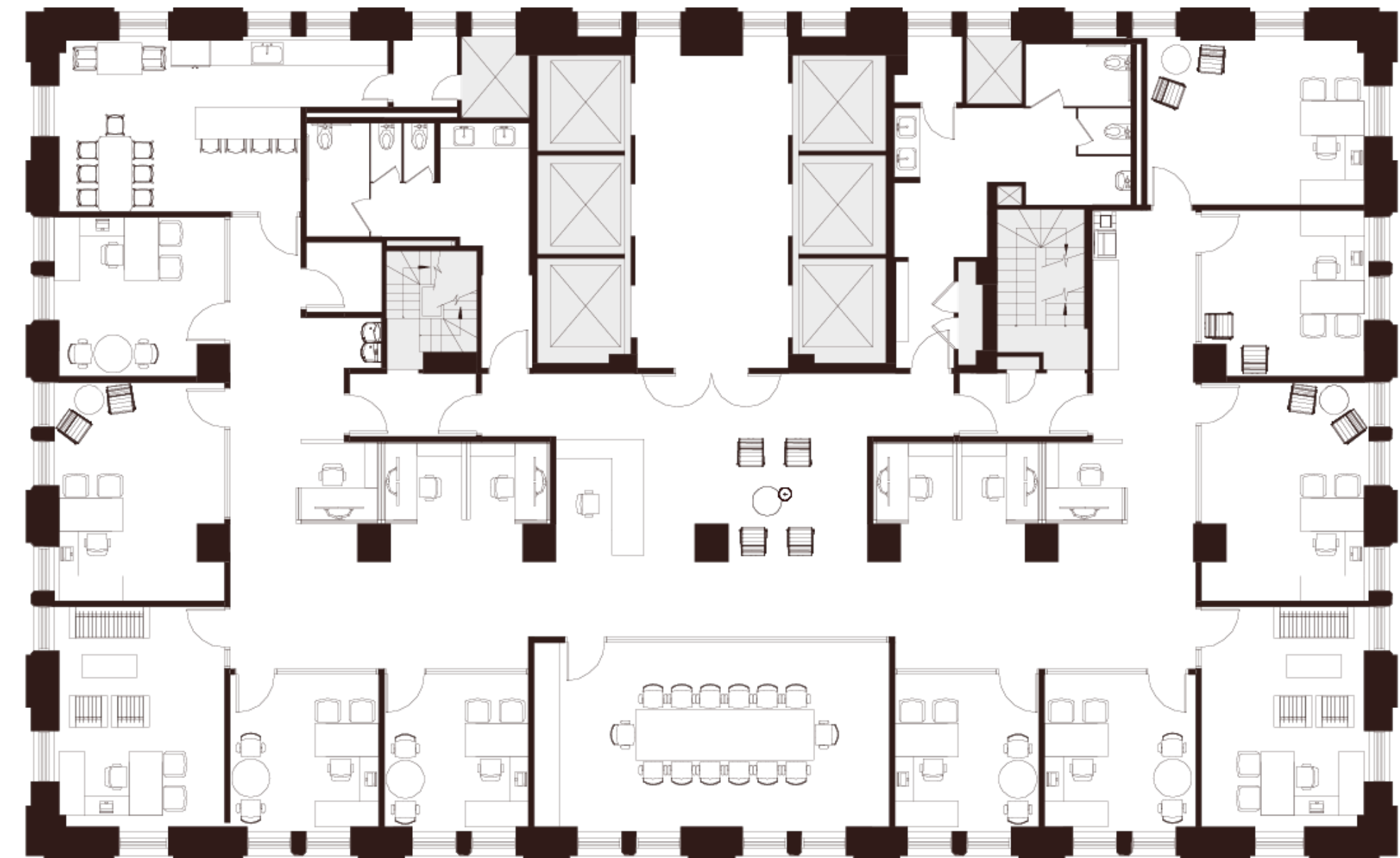
- 11 Private Offices
- 6 Workstations
- 1 Conference Room
- 1 Break Area
- 1 Copy Area
- 1 Reception Area
- 1 Server Room
- 1 Storage Room

Jim Collins

[jcollins@shorenstein.com](mailto:jcollins@shorenstein.com)

(415) 352-7239

Lic. #00860991



Montgomery Street



235 Montgomery St. San Francisco, CA 94104

