

Floor 21

Suite 2100

~11,606 SQFT

High-Rise — Base Plan

Jim Collins

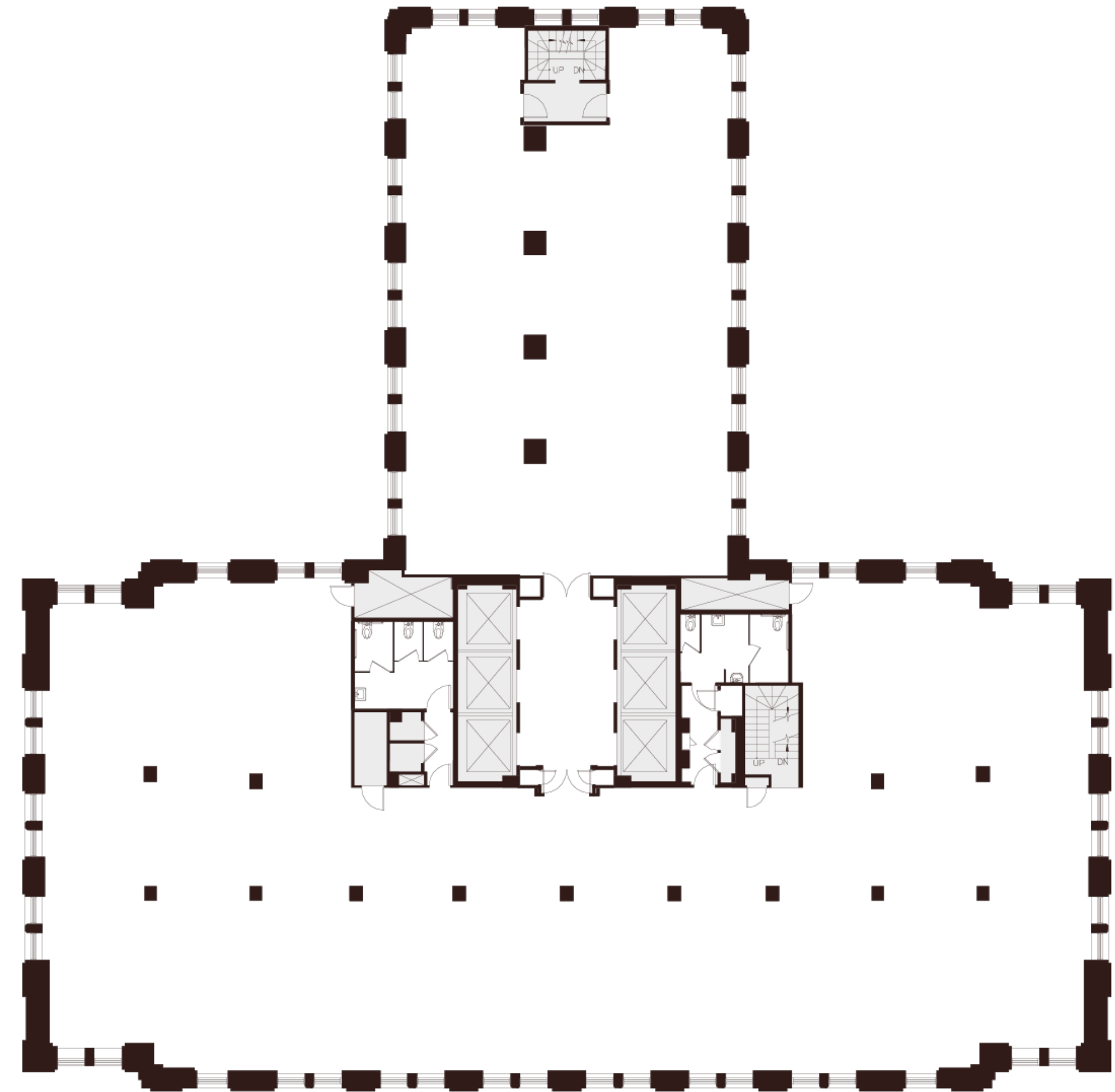
jcollins@shorenstein.com

(415) 352-7239

Lic. #00860991



235 Montgomery St. San Francisco, CA 94104



Montgomery Street



Floor 21

Suite 2100

~11,606 SQFT

High-Rise — Hypothetical Open Office

- 101 Workstations
- 1 Conference Room
- 5 Huddle Rooms
- 1 Phone Room
- 1 Break Room
- 1 Copy Area
- 1 Reception Area
- 1 Server Room
- 1 Storage Room

Jim Collins

jcollins@shorenstein.com

(415) 352-7239

Lic. #00860991



235 Montgomery St. San Francisco, CA 94104



Montgomery Street



Floor 21

Suite 2100

~11,606 SQFT

High-Rise — Hypothetical Private Office

- 22 Private Offices
- 13 Workstations
- 2 Conference Rooms
- 2 Huddle Rooms
- 1 Phone Room
- 1 Break Room
- 2 Copy Areas
- 1 Reception Area
- 1 Server Room

Jim Collins

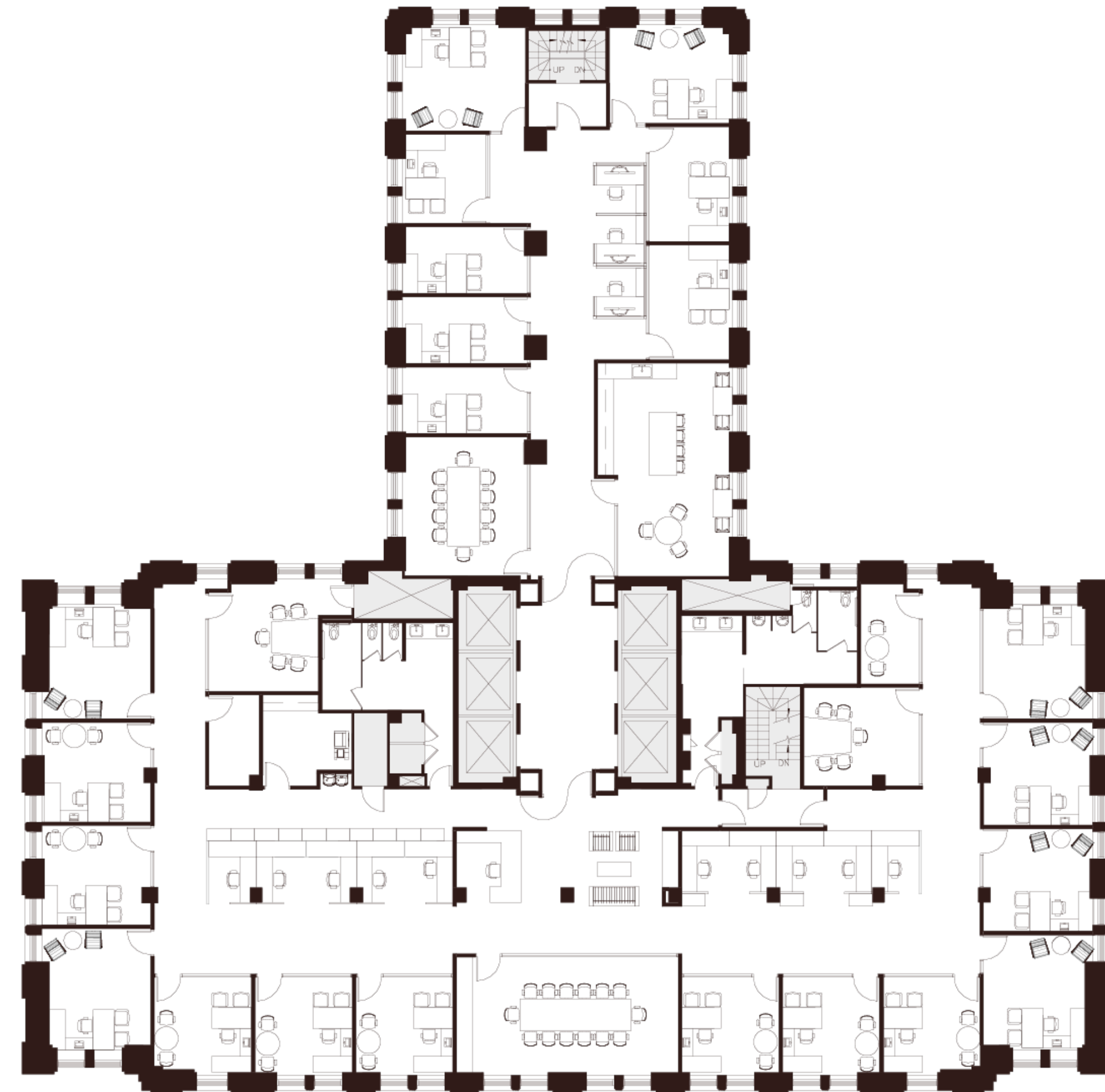
jcollins@shorenstein.com

(415) 352-7239

Lic. #00860991



235 Montgomery St. San Francisco, CA 94104



Montgomery Street

